

Further information:
tilastot@kela.fi

Benefits for families with children

7.1 Recipients of maternity grant
(no. of children for whom paid) 1975–2018 (30.1.2019)

[Chart](#) [Data](#)

7.2 Expenditure on maternity grants 1973–2018 (27.2.2019)

[Chart](#) [Data](#)

7.3 Maternity grants according to interpregnancy interval and number of children in the family, 2018 (30.1.2019)

[Chart](#) [Data](#)

7.4 Recipients of child benefit (children and families) 1948–2018 (30.1.2019)

[Chart](#) [Data](#)

7.5 Recipient families according to number of children, at year-end 2018 (30.1.2019)

[Chart](#) [Data](#)

7.6 Payments of child benefit 1948–2018 (27.2.2019)

[Chart](#) [Data](#)

7.7 Child care allowances: Number of recipients, 1985–2018 (30.1.2019)

[Chart](#) [Data](#)

7.8 Expenditure on child care allowances 1985–2018 (30.1.2019)

[Chart](#) [Data](#)

7.9 Benefits for families with children paid out by Kela in 2018 (27.2.2019)

[Chart](#) [Data](#)

7.10 Maternity, paternity and parental allowance: Number of days reimbursed to

[Chart](#) [Data](#)

7.11 Payments of maternity, paternity and parental allowance in 2017 by age of recipient (30.1.2019)

[Chart](#) [Data](#)

7.12 Average rate of maternity, paternity and parental allowances in 2018 (30.1.2019)

[Chart](#) [Data](#)

Further information:
tilastot@kela.fi

Benefits for families with children

7.13 Occupational status and classification of gainfully employed mothers and fathers who were paid maternity, paternity or parental allowance in 2017 (28.9.2018)

[Chart](#)

[Data](#)

7.14 Share of families with three or more children among families in receipt of child benefit, by region, at year-end 2018 (30.1.2019)

[Chart](#)

[Data](#)

7.15 Share of children in receipt of child maintenance allowance in total child population between ages 0 and 17, by region, at year-end 2017 (28.9.2018)

[Chart](#)

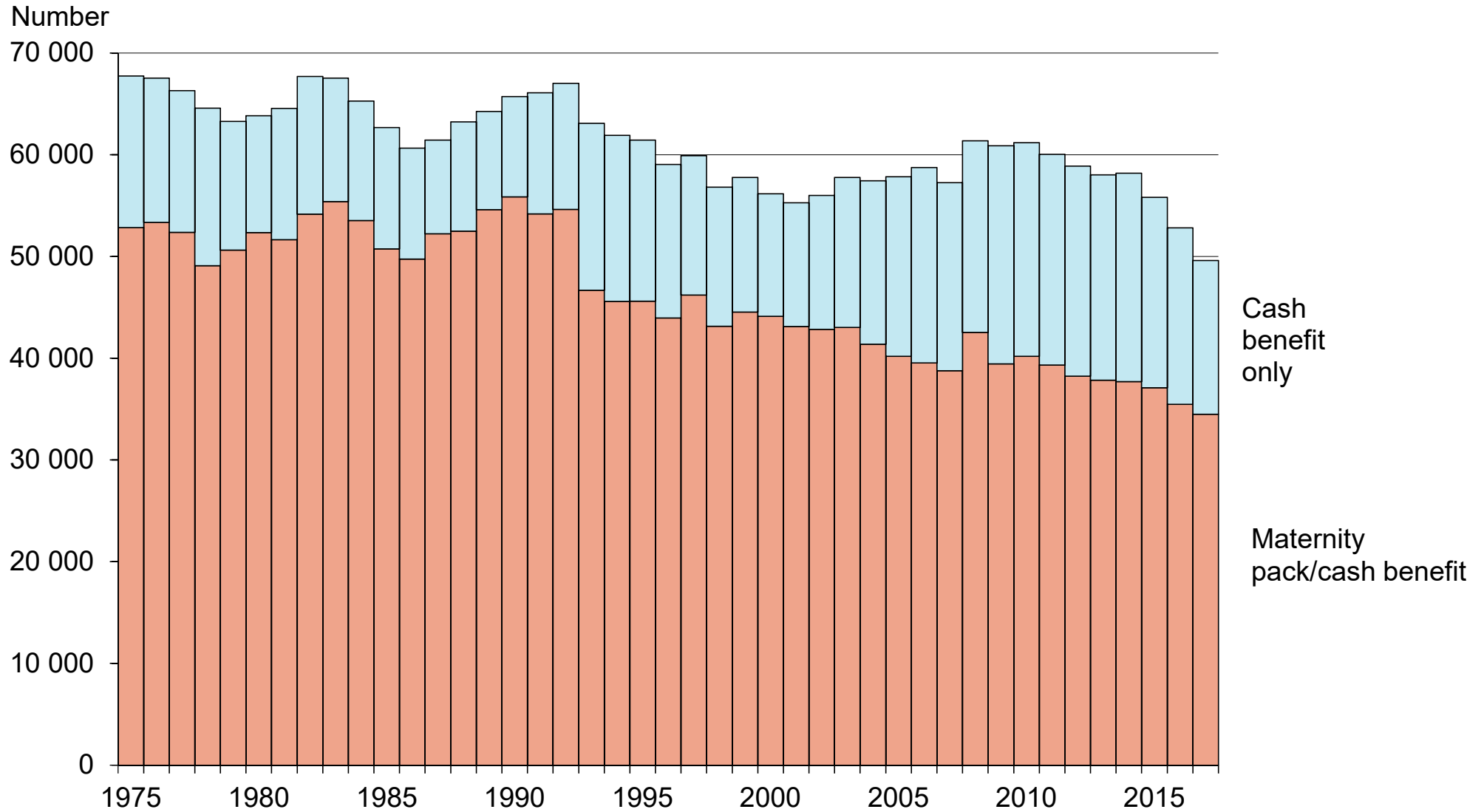
[Data](#)

7.1 Recipients of maternity grant (no. of children for whom paid) 1975–2018

Year	Number of children		
	Maternity pack/cash benefit	Cash benefit only	Total
1974	47 843	15 108	62 951
1975	52 847	14 906	67 753
1976	53 358	14 184	67 542
1977	52 378	13 923	66 301
1978	49 086	15 501	64 587
1979	50 621	12 655	63 276
1980	52 356	11 493	63 849
1981	51 646	12 912	64 558
1982	54 166	13 541	67 707
1983	55 389	12 159	67 548
1984	53 537	11 752	65 289
1985	50 759	11 907	62 666
1986	49 740	10 919	60 659
1987	52 230	9 217	61 447
1988	52 488	10 751	63 239
1989	54 615	9 638	64 253
1990	55 859	9 857	65 716
1991	54 200	11 898	66 098
1992	54 628	12 400	67 028
1993	46 680	16 418	63 098
1994	45 579	16 341	61 920
1995	45 620	15 814	61 434
1996	43 965	15 085	59 050
1997	46 210	13 706	59 916
1998	43 155	13 662	56 817
1999	44 540	13 225	57 765
2000	44 110	12 052	56 162
2001	43 116	12 171	55 287
2002	42 834	13 161	55 995
2003	43 021	14 749	57 770
2004	41 386	16 061	57 447
2005	40 181	17 660	57 841
2006	39 550	19 199	58 749
2007	38 779	18 470	57 249
2008	42 532	18 848	61 380
2009	39 445	21 441	60 886
2010	40 197	20 980	61 177
2011	39 321	20 726	60 047
2012	38 245	20 633	58 878
2013	37 834	20 184	58 018
2014	37 712	20 477	58 189
2015	37 110	18 710	55 820
2016	35 466	17 341	52 807
2017	34 489	15 126	49 615
2018	31 112	14 730	45 842

Statistics and Data Warehousing Section 30.1.2019

7.1 Recipients of maternity grant (no. of children for whom paid) 1975–2018

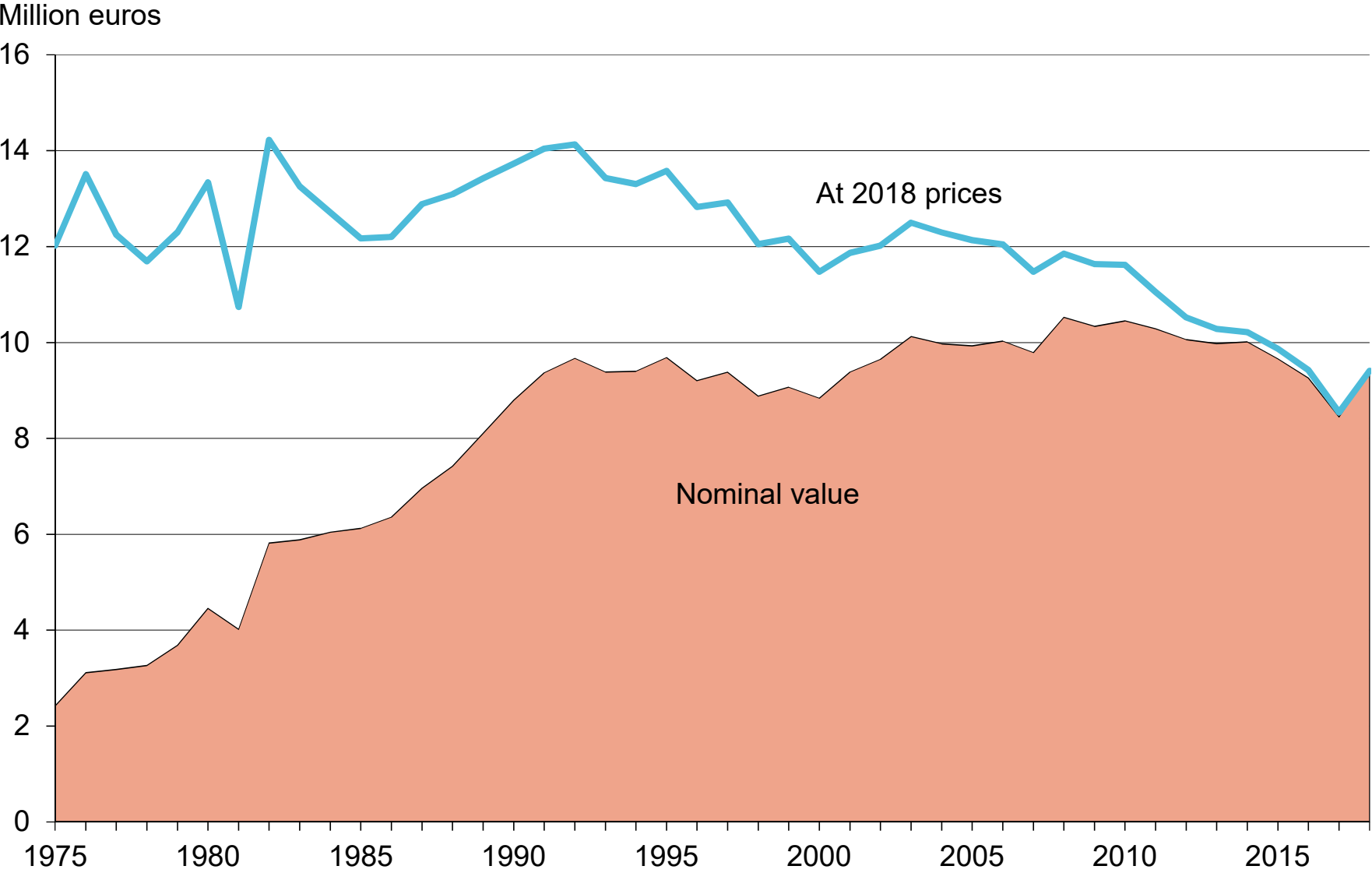


7.2 Expenditure on maternity grants 1973–2018

Year	Million euros	
	At 2018 prices	Nominal value
1973	5,5	0,8
1974	6,9	1,2
1975	12,0	2,4
1976	13,5	3,1
1977	12,3	3,2
1978	11,7	3,3
1979	12,3	3,7
1980	13,3	4,5
1981	10,7	4,0
1982	14,2	5,8
1983	13,3	5,9
1984	12,7	6,0
1985	12,2	6,1
1986	12,2	6,4
1987	12,9	7,0
1988	13,1	7,4
1989	13,4	8,1
1990	13,7	8,8
1991	14,0	9,4
1992	14,1	9,7
1993	13,4	9,4
1994	13,3	9,4
1995	13,6	9,7
1996	12,8	9,2
1997	12,9	9,4
1998	12,1	8,9
1999	12,2	9,1
2000	11,5	8,8
2001	11,9	9,4
2002	12,0	9,6
2003	12,5	10,1
2004	12,3	10,0
2005	12,1	9,9
2006	12,0	10,0
2007	11,5	9,8
2008	11,9	10,5
2009	11,6	10,3
2010	11,6	10,4
2011	11,1	10,3
2012	10,5	10,1
2013	10,3	10,0
2014	10,2	10,0
2015	9,9	9,7
2016	9,4	9,3
2017	8,5	8,4
2018	9,4	9,4

Statistics and Data Warehousing Section 27.2.2019

7.2 Expenditure on maternity grants 1975–2018



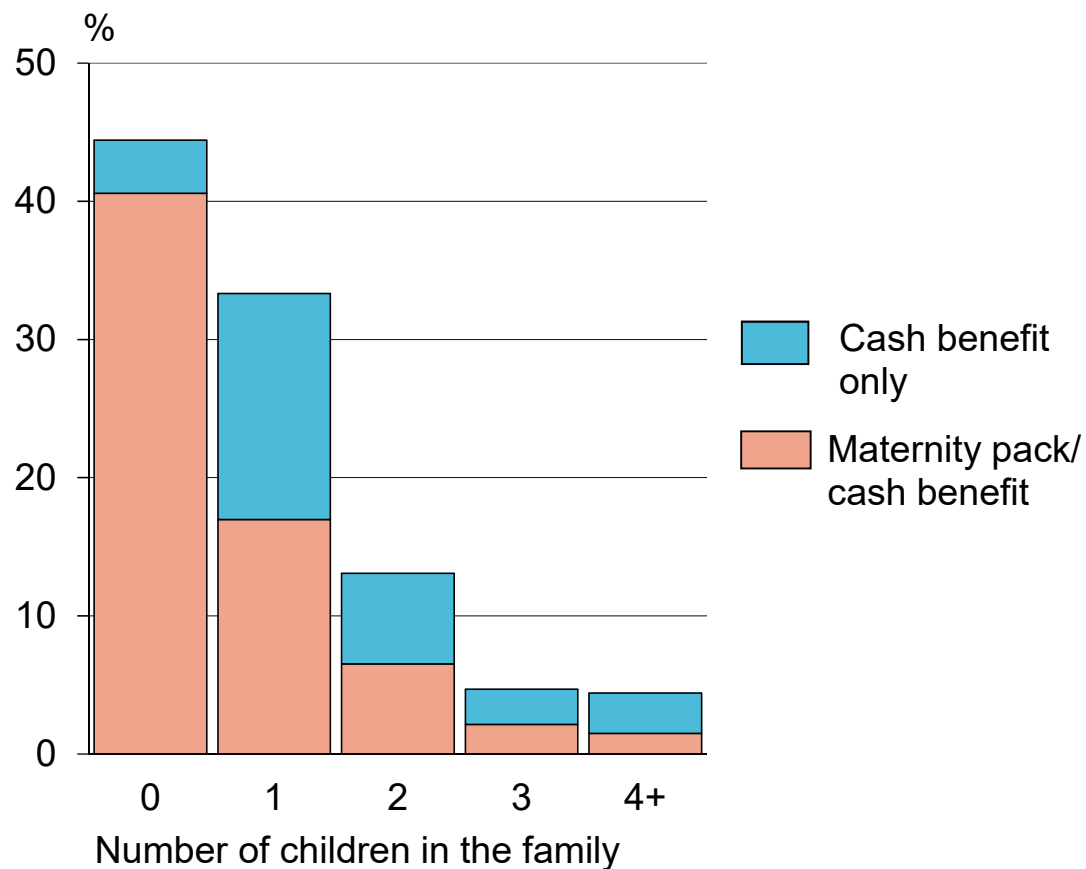
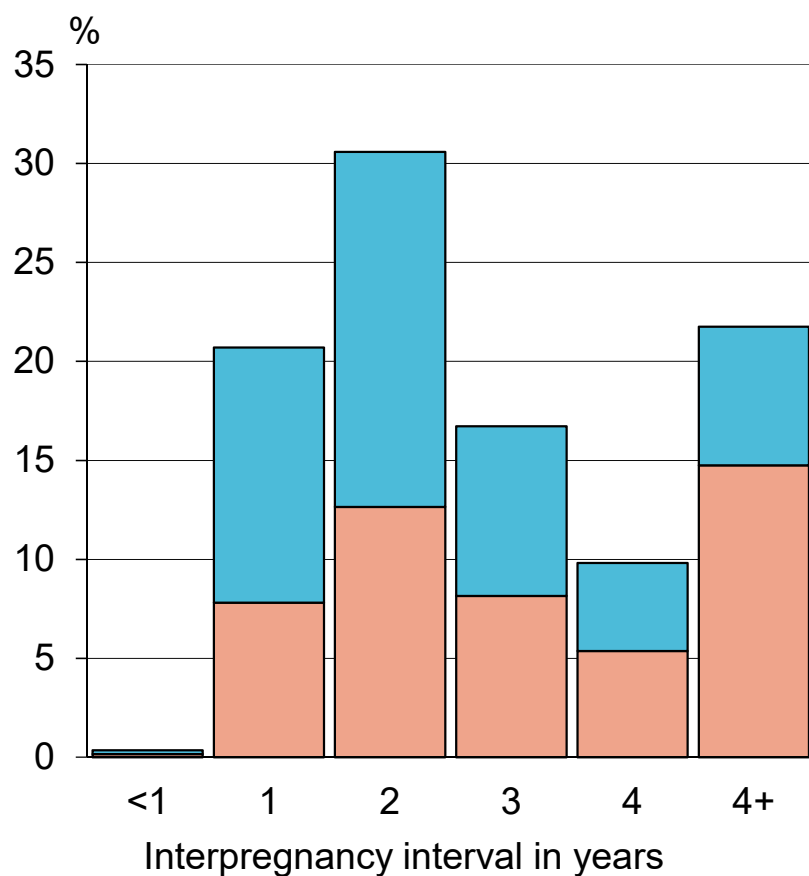
7.3 Maternity grants according to interpregnancy interval and number of children in the family, 2018

Interpregnancy interval in years	per cent	
	Maternity pack/ cash benefit	Cash benefit only
<1	0,2	0,2
1	7,8	12,9
2	12,6	17,9
3	8,2	8,6
4	5,4	4,4
4+	14,8	7,0
Total	100,0	

Number of children in the family	per cent	
	Maternity pack/ cash benefit	Cash benefit only
0	40,6	3,9
1	17,0	16,4
2	6,5	6,6
3	2,2	2,5
4+	1,5	2,9
Total	100,0	

Statistics and Data Warehousing Section 30.1.2019

7.3 Maternity grants according to interpregnancy interval and number of children in the family, 2018



7.4 Recipients of child benefit (children and families) 1948–2018

Year*	Number, thousands	
	Families	Children
1948	540,4	1 167,3
1949	564,9	1 229,1
1950	584,4	1 262,2
1951	598,9	1 292,1
1952	607,1	1 319,2
1953	616,3	1 340,5
1954	624,3	1 357,5
1955	630,9	1 373,0
1956	638,4	1 398,2
1957	642,7	1 397,2
1958	647,8	1 416,3
1959	653,7	1 425,9
1960	656,6	1 431,7
1961	658,1	1 419,5
1962	648,7	1 398,5
1963	645,6	1 377,4
1964	640,6	1 354,6
1965	638,3	1 332,0
1966	635,3	1 312,2
1967	637,7	1 297,5
1968	640,2	1 276,7
1969	640,1	1 252,1
1970	637,3	1 202,4
1971	636,7	1 180,2
1972	638,0	1 156,8
1973	641,2	1 134,8
1974	644,5	1 122,0
1975	649,2	1 118,4
1976	650,7	1 104,5
1977	647,7	1 083,7
1978	647,4	1 067,6
1979	642,0	1 052,3
1980	634,7	1 038,9
1981	627,5	1 029,5
1982	620,8	1 024,2
1983	612,9	1 019,8
1984	604,8	1 015,8
1985	598,9	1 014,2
1986	601,0	1 027,9
1987	618,2	1 072,2
1988	615,8	1 072,9
1989	616,6	1 079,2
1990	620,0	1 089,5
1991	622,4	1 095,0
1992	624,0	1 097,0
1993	621,0	1 097,2
1994	618,3	1 097,8

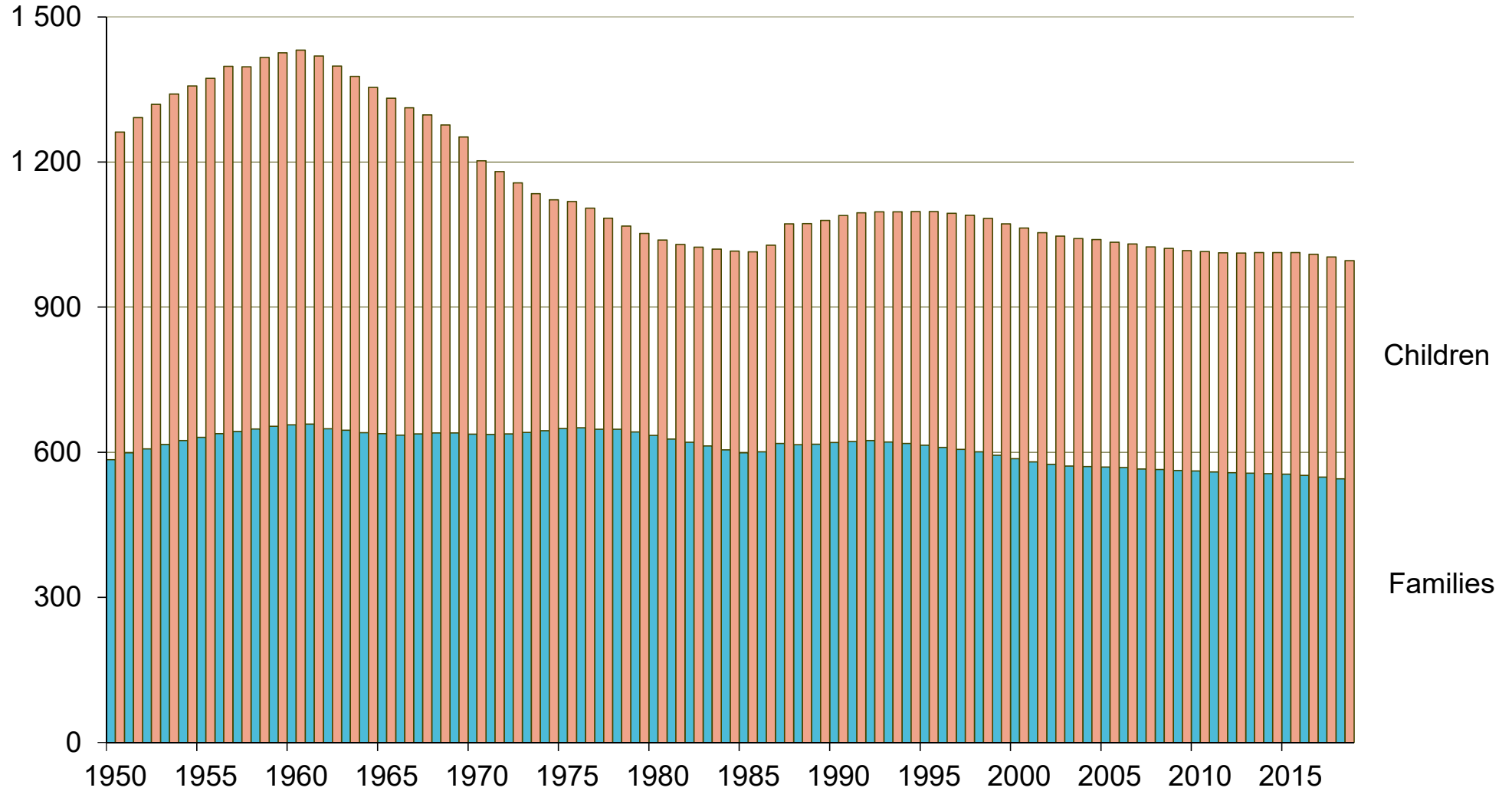
Year*	Number, thousands	
	Families	Children
1995	614,6	1 097,4
1996	609,9	1 093,8
1997	606,0	1 090,1
1998	600,7	1 083,3
1999	593,6	1 072,2
2000	586,8	1 063,7
2001	580,0	1 054,2
2002	574,8	1 046,9
2003	571,4	1 041,9
2004	570,4	1 040,0
2005	569,6	1 034,4
2006	568,3	1 030,7
2007	565,2	1 024,5
2008	564,3	1 021,3
2009	562,4	1 016,9
2010	561,5	1 014,9
2011	559,5	1 012,4
2012	557,7	1 011,9
2013	556,6	1 012,8
2014	555,7	1 012,8
2015	554,8	1 012,8
2016	552,0	1 009,1
2017	548,6	1 003,6
2018	545,2	996,4

* Number at year-end

Statistics and Data Warehousing Section 30.1.2019

7.4 Recipients of child benefit (children and families) 1950–2018

Number, thousands



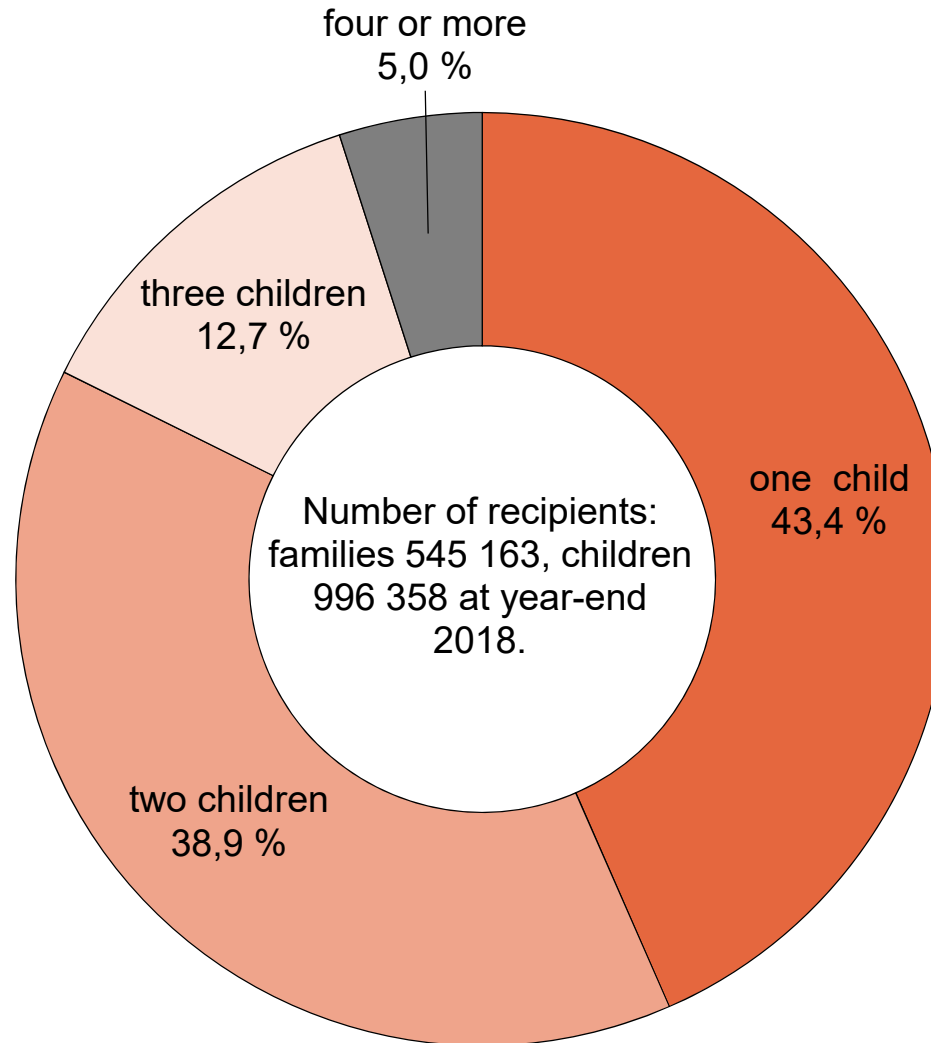
7.5 Recipient families according to number of children, at year-end 2018

	Families	Per cent
one child	236 777	43,4
two children	211 965	38,9
three children	69 429	12,7
four or more	26 992	5,0
Total	545 163	100,0

Number of recipients: families 545 163, children 996 358 at year-end 2018.

Statistics and Data Warehousing Section 30.1.2019

7.5 Recipient families according to number of children, at year-end 2018



7.6 Payments of child benefit 1948–2018

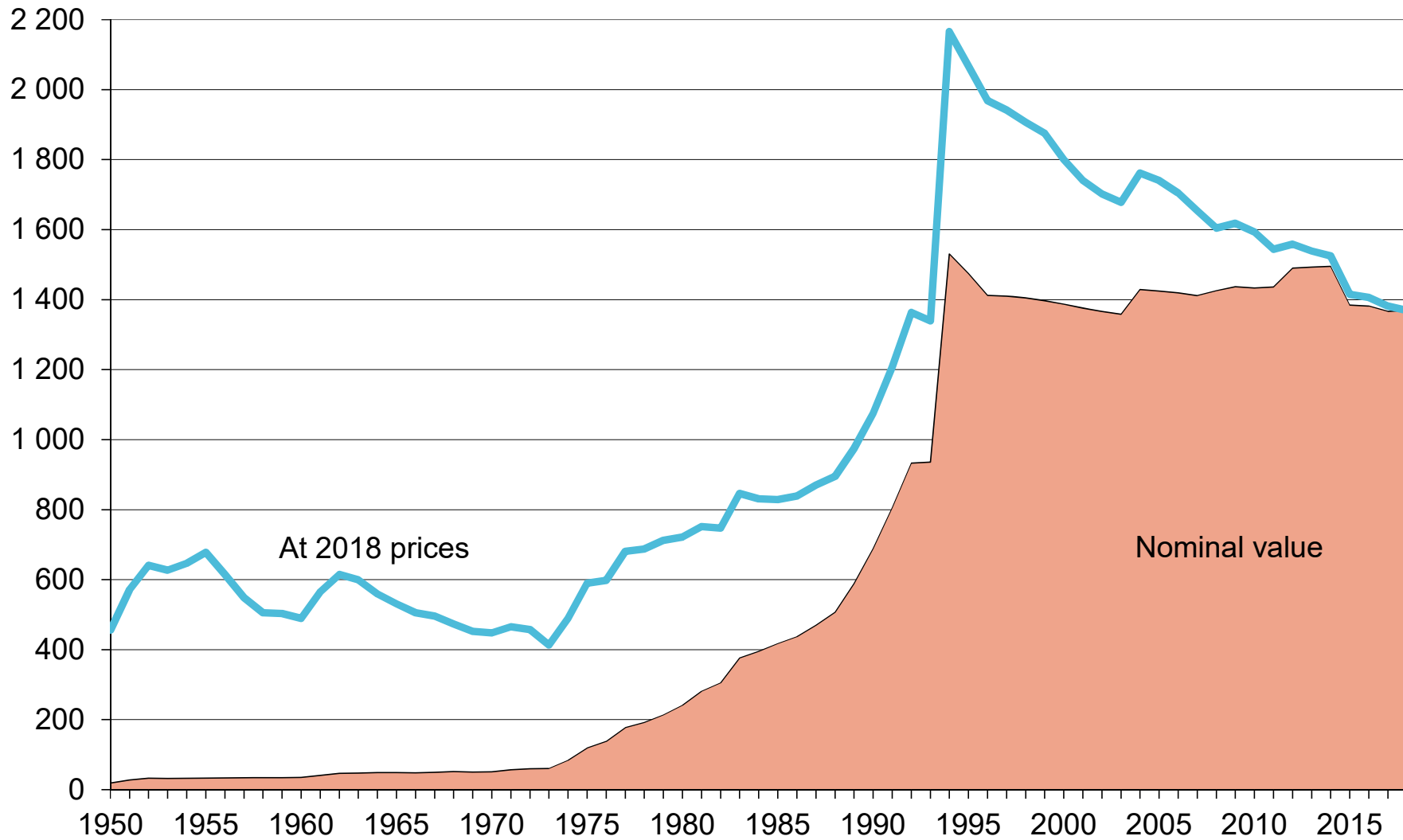
Year	Million euros	
	At 2018 prices	Nominal value
1948	97,7	3,5
1949	405,4	14,9
1950	455,9	19,1
1951	571,7	27,9
1952	641,1	32,6
1953	627,0	32,3
1954	646,9	32,8
1955	678,3	33,2
1956	614,5	33,6
1957	548,7	34,0
1958	505,2	34,1
1959	503,1	34,5
1960	489,8	34,7
1961	565,0	40,8
1962	614,5	46,3
1963	599,3	47,4
1964	559,3	48,8
1965	530,6	48,5
1966	505,3	48,0
1967	495,9	49,7
1968	473,1	51,4
1969	452,2	50,3
1970	448,0	51,2
1971	465,3	56,6
1972	457,0	59,6
1973	413,3	60,2
1974	489,6	83,7
1975	589,6	118,8
1976	597,7	137,7
1977	681,0	176,7
1978	687,6	191,9
1979	712,5	213,4
1980	722,1	241,2
1981	751,8	281,4
1982	746,9	305,5
1983	846,6	375,9
1984	831,0	394,8
1985	829,2	417,1
1986	839,1	437,3
1987	870,0	470,0
1988	894,9	507,0
1989	974,8	588,7
1990	1 074,8	688,6
1991	1 207,8	805,8
1992	1 363,5	933,3
1993	1 339,3	935,9
1994	2 165,9	1 530,6

Year	Million euros	
	At 2018 prices	Nominal value
1995	2 067,5	1 474,7
1996	1 968,9	1 412,4
1997	1 941,8	1 410,2
1998	1 906,4	1 404,9
1999	1 875,0	1 397,2
2000	1 800,4	1 387,1
2001	1 740,8	1 376,1
2002	1 702,0	1 366,0
2003	1 677,8	1 358,6
2004	1 761,7	1 428,8
2005	1 740,7	1 424,4
2006	1 704,7	1 419,4
2007	1 654,2	1 411,4
2008	1 604,5	1 425,0
2009	1 618,0	1 436,9
2010	1 593,6	1 433,1
2011	1 543,7	1 436,0
2012	1 558,4	1 489,8
2013	1 539,1	1 492,8
2014	1 525,1	1 495,2
2015	1 414,8	1 384,4
2016	1 406,6	1 381,7
2017	1 381,3	1 366,2
2018	1 369,3	1 369,3

Statistics and Data Warehousing Section 27.2.2019

7.6 Payments of child benefit 1950–2018

Million euros



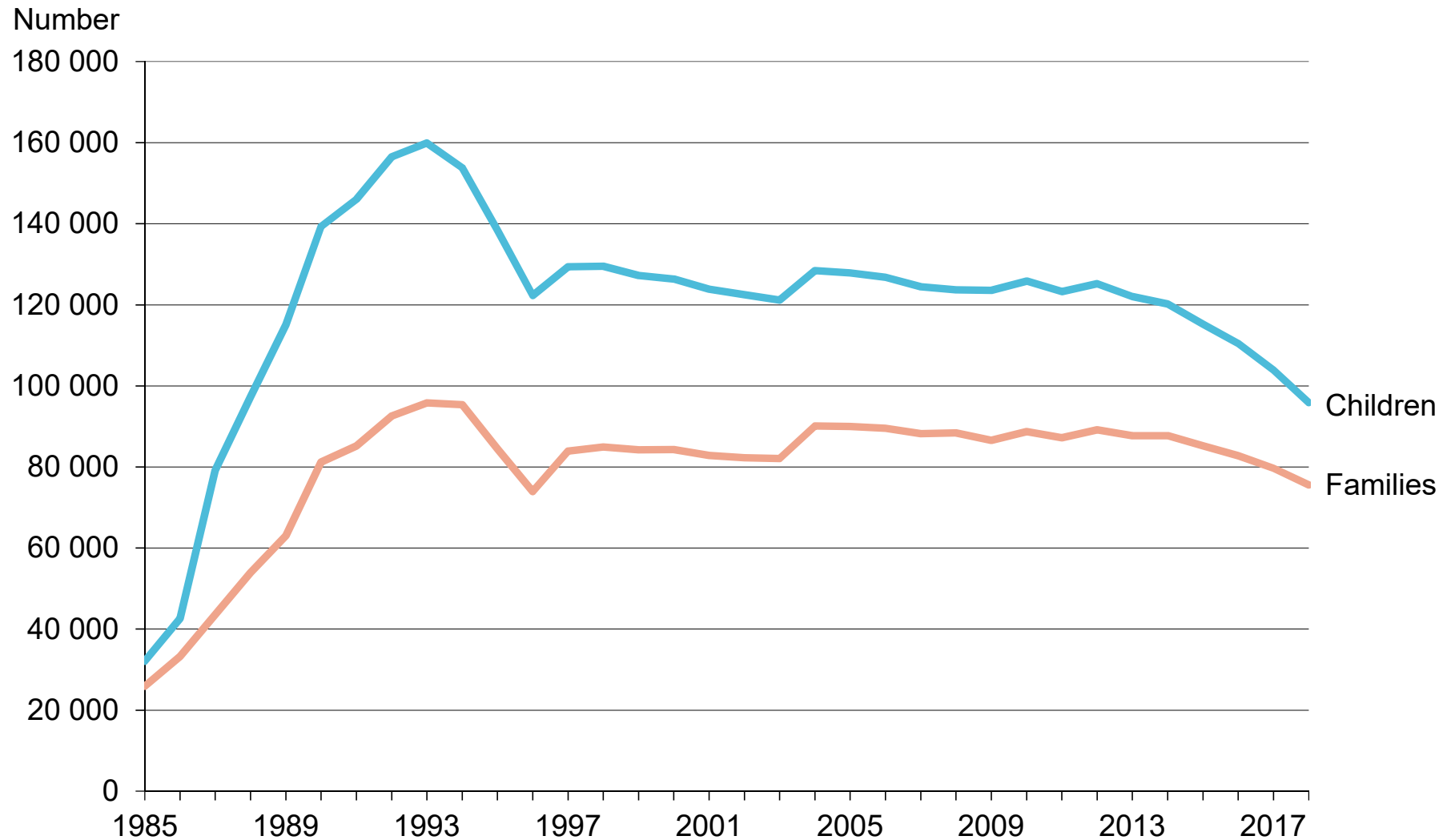
7.7 Child care allowances: Number of recipients, 1985–2018

Year	Number *	
	Families	Children
1985	25 890	32 078
1986	33 277	42 601
1987	43 572	79 195
1988	53 968	97 336
1989	63 068	115 095
1990	81 207	139 313
1991	85 205	146 014
1992	92 574	156 515
1993	95 817	159 939
1994	95 384	153 840
1995	84 476	138 437
1996	73 955	122 334
1997	83 922	129 399
1998	84 917	129 499
1999	84 248	127 253
2000	84 326	126 334
2001	82 869	123 861
2002	82 306	122 524
2003	82 064	121 182
2004	90 141	128 449
2005	90 025	127 858
2006	89 575	126 788
2007	88 212	124 487
2008	88 437	123 728
2009	86 575	123 605
2010	88 718	125 852
2011	87 243	123 247
2012	89 143	125 218
2013	87 733	122 033
2014	87 692	120 243
2015	85 210	115 209
2016	82 792	110 502
2017	79 708	103 928
2018	75 563	95 897

* December

Statistics and Data Warehousing Section 30.1.2019

7.7 Child care allowances: Number of recipients, 1985–2018



7.8 Expenditure on child care allowances 1985–2018

Year	Million euros (at 2018 prices)										
	Basic amount	Supplementary allowance	Child increment	Home care allowances	Home care supplements	Private day care allowances	Private day care supplements	Flexible care allowance	Part-time care allowance	Municipal supplement	Total
1985	57,7	3,4	2,8	63,8
1986	127,0	8,3	4,4	1,5	141,2
1987	178,3	36,5	31,3	6,5	252,5
1988	209,2	50,3	35,5	7,2	302,2
1989	245,1	61,3	39,6	2,0	39,9	387,8
1990	326,4	79,8	44,8	2,2	133,3	586,5
1991	374,8	104,3	50,4	2,5	136,1	668,1
1992	478,2	160,4	63,0	2,8	85,2	789,5
1993	490,0	182,0	65,4	2,1	37,6	777,2
1994	499,8	191,3	68,2	1,8	17,8	779,0
1995	463,2	175,8	65,6	1,8	13,6	720,1
1996	301,1	109,0	44,7	1,4	22,3	478,6
1997	166,5	58,0	24,8	124,2	56,9	6,9	1,2	.	1,4	37,3	477,1
1998	.	.	.	307,5	145,7	20,5	3,9	.	1,2	56,5	535,2
1999	.	.	.	293,2	137,2	24,4	4,8	.	1,2	56,1	516,8
2000	.	.	.	282,3	126,9	24,3	4,4	.	1,3	55,9	495,1
2001	.	.	.	271,3	114,6	24,3	4,0	.	1,5	58,4	474,1
2002	.	.	.	265,4	105,5	23,9	3,6	.	1,7	62,3	462,4
2003	.	.	.	259,6	97,7	23,3	3,2	.	2,0	63,6	449,3
2004	.	.	.	254,9	90,1	23,6	2,8	.	5,7	66,0	443,0
2005	.	.	.	290,2	83,3	28,6	2,6	.	10,8	69,8	485,1
2006	.	.	.	285,4	76,5	29,2	2,4	.	10,5	70,5	474,3
2007	.	.	.	279,1	67,6	30,8	2,4	.	10,3	72,1	462,3
2008	.	.	.	267,6	57,6	30,6	2,2	.	9,9	75,7	443,5
2009	.	.	.	286,0	54,8	34,5	1,9	.	9,4	94,0	480,6

Year	Million euros (at 2018 prices)										
	Basic amount	Supplementary allowance	Child increment	Home care allowances	Home care supplements	Private day care allowances	Private day care supplements	Flexible care allowance	Part-time care allowance	Municipal supplement	Total
2010	.	.	.	289,0	52,7	35,8	1,9	.	12,8	101,7	493,9
2011	.	.	.	276,2	47,4	35,6	1,7	.	13,9	104,1	478,9
2012	.	.	.	279,1	46,0	35,7	1,7	.	15,0	101,7	479,1
2013	.	.	.	281,8	46,1	36,0	1,7	.	16,0	99,8	481,5
2014	.	.	.	270,6	44,9	35,1	1,7	16,6	9,8	93,9	472,6
2015	.	.	.	258,9	44,2	35,7	1,9	19,1	9,4	94,0	463,1
2016	.	.	.	247,7	41,9	33,1	1,7	18,8	9,7	90,1	443,1
2017	.	.	.	232,1	38,7	30,2	1,6	19,0	10,0	90,9	422,5
2018	.	.	.	210,5	35,3	28,2	1,5	19,1	10,1	88,7	393,3

Statistics and Data Warehousing Section 30.1.2019

7.8 Expenditure on child care allowances 1985–2018

Year	Million euros (At nominal value)										
	Basic amount	Supplementary allowance	Child increment	Home care allowances	Home care supplements	Private day care allowances	Private day care supplements	Flexible care allowance	Part-time care allowance	Municipal supplement	Total
1985	29,0	1,7	1,4	32,1
1986	66,2	4,3	2,3	0,8	73,6
1987	96,3	19,7	16,9	3,5	136,4
1988	118,5	28,5	20,1	4,1	171,2
1989	148,0	37,0	23,9	1,2	24,1	234,2
1990	209,1	51,1	28,7	1,4	85,4	375,7
1991	250,0	69,6	33,6	1,7	90,8	445,7
1992	327,3	109,8	43,1	1,9	58,3	540,4
1993	342,4	127,2	45,7	1,5	26,3	543,1
1994	353,2	135,2	48,2	1,3	12,6	550,5
1995	330,4	125,4	46,8	1,3	9,7	513,6
1996	216,0	78,2	32,1	1,0	16,0	343,3
1997	120,9	42,1	18,0	90,2	41,3	5,0	0,9	.	1,0	27,1	346,5
1998	.	.	.	226,6	107,4	15,1	2,9	.	0,9	41,6	394,4
1999	.	.	.	218,5	102,2	18,2	3,6	.	0,9	41,8	385,1
2000	.	.	.	217,5	97,8	18,7	3,4	.	1,0	43,1	381,4
2001	.	.	.	214,5	90,6	19,2	3,2	.	1,2	46,2	374,8
2002	.	.	.	213,0	84,7	19,2	2,9	.	1,4	50,0	371,1
2003	.	.	.	210,2	79,1	18,9	2,6	.	1,6	51,5	363,8
2004	.	.	.	206,7	73,1	19,1	2,3	.	4,7	53,5	359,3
2005	.	.	.	237,5	68,2	23,4	2,1	.	8,8	57,1	397,0
2006	.	.	.	237,6	63,7	24,3	2,0	.	8,7	58,7	394,9
2007	.	.	.	238,1	57,7	26,3	2,1	.	8,8	61,5	394,5
2008	.	.	.	237,6	51,1	27,2	1,9	.	8,8	67,2	393,9
2009	.	.	.	254,0	48,6	30,6	1,7	.	8,4	83,4	426,8

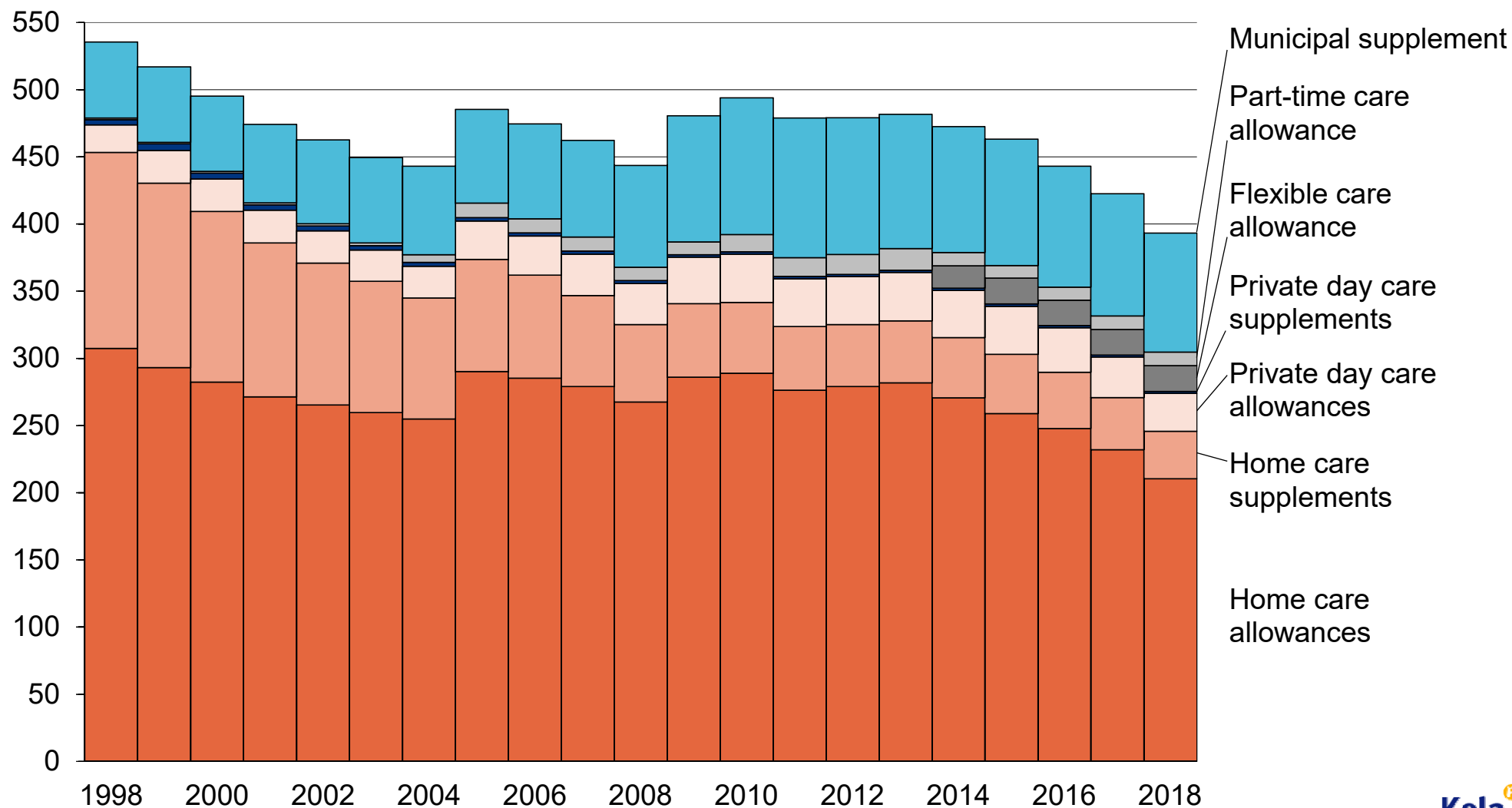
Year	Million euros (At nominal value)										
	Basic amount	Supplementary allowance	Child increment	Home care allowances	Home care supplements	Private day care allowances	Private day care supplements	Flexible care allowance	Part-time care allowance	Municipal supplement	Total
2010	.	.	.	259,9	47,4	32,2	1,7	.	11,5	91,5	444,1
2011	.	.	.	257,0	44,1	33,1	1,6	.	12,9	96,8	445,5
2012	.	.	.	266,8	44,0	34,1	1,6	.	14,3	97,3	458,1
2013	.	.	.	273,3	44,8	34,9	1,6	.	15,6	96,8	467,1
2014	.	.	.	265,3	44,0	34,4	1,7	16,2	9,6	92,0	463,3
2015	.	.	.	253,3	43,2	35,0	1,8	18,7	9,2	92,0	453,1
2016	.	.	.	243,3	41,2	32,5	1,7	18,5	9,5	88,5	435,2
2017	.	.	.	229,6	38,3	29,8	1,6	18,8	9,9	89,9	417,9
2018	.	.	.	210,5	35,3	28,2	1,5	19,1	10,1	88,7	393,3

Statistics and Data Warehousing Section 30.1.2019

7.8 Expenditure on child care allowances 1998–2018

(at 2018 prices)

Million euros

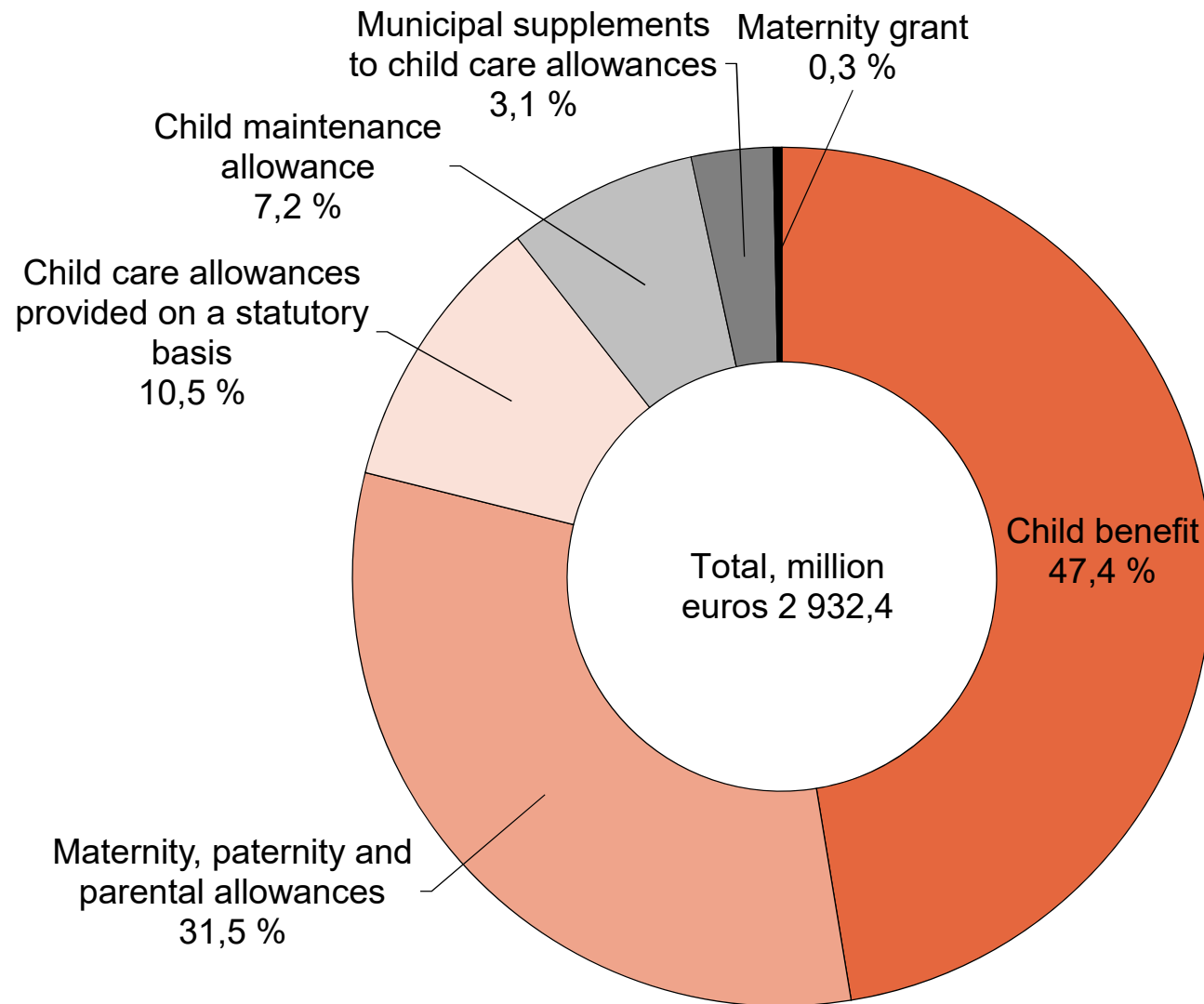


7.9 Benefits for families with children paid out by Kela in 2018

	Million euros	per cent
Child benefit	1 369,3	46,6
Maternity, paternity and parental allowances	908,9	31,9
Child care allowances provided on a statutory basis	304,6	11,2
Child maintenance allowance	207,0	7,0
Municipal supplements to child care allowances	88,7	3,1
Maternity grant	9,3	0,3
Total	2 932,4	100,0

Statistics and Data Warehousing Section 27.2.2019

7.9 Benefits for families with children paid out by Kela in 2018

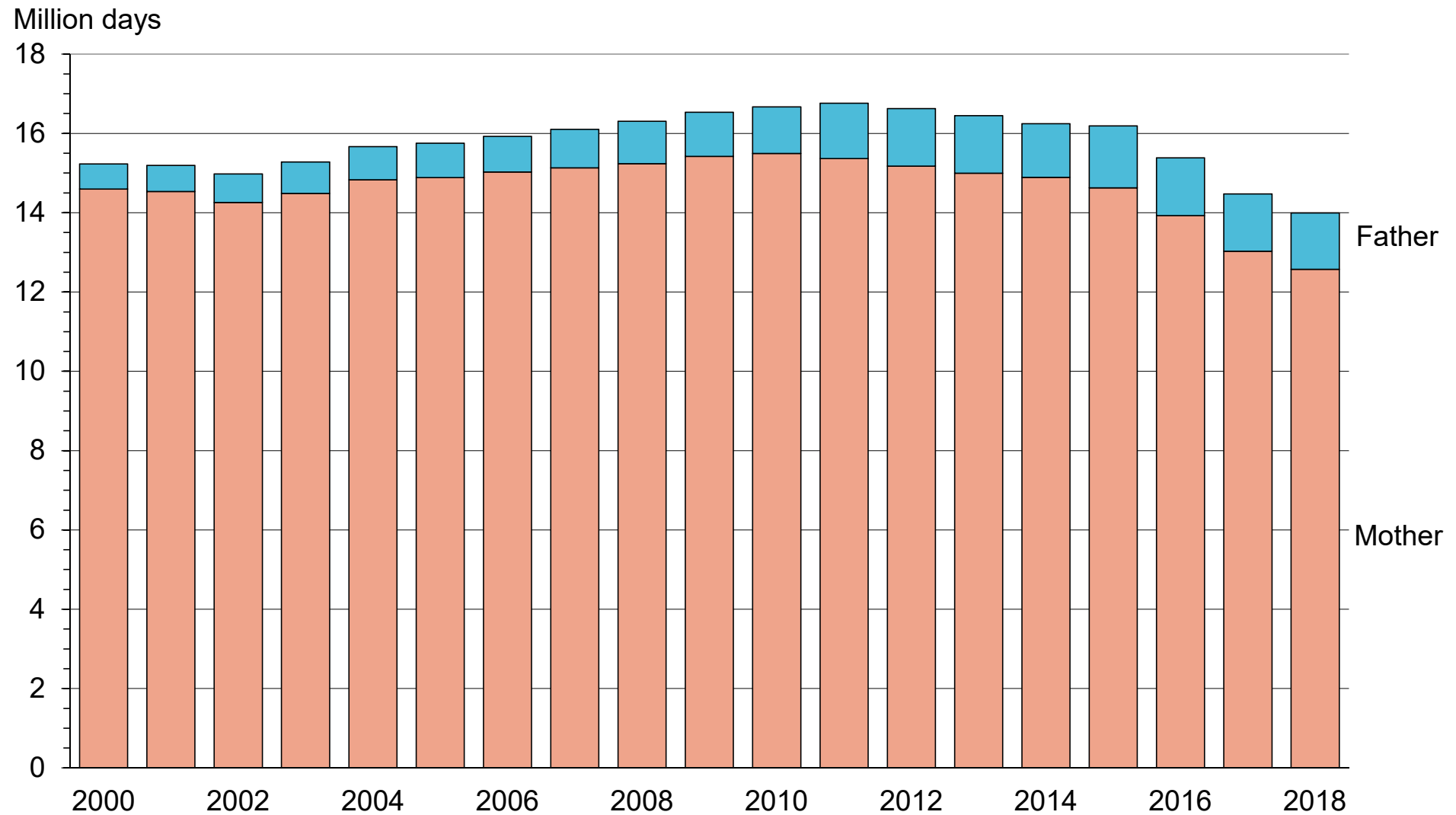


7.10 Maternity, paternity and parental allowance: Number of days reimbursed to mothers and fathers, 1989–2018

Year	Reimbursed days			per cent	
	Mother	Father	Total	Mother	Father
1989	15 923 935	349 510	16 273 445	97,9	2,1
1990	16 502 261	406 346	16 908 607	97,6	2,4
1991	16 924 670	567 826	17 492 496	96,8	3,2
1992	17 734 914	607 611	18 342 525	96,7	3,3
1993	17 792 023	618 557	18 410 580	96,6	3,4
1994	16 736 431	629 975	17 366 406	96,4	3,6
1995	16 340 861	606 432	16 947 293	96,4	3,6
1996	15 654 366	583 345	16 237 711	96,4	3,6
1997	15 377 500	603 375	15 980 875	96,2	3,8
1998	14 777 304	603 784	15 381 088	96,1	3,9
1999	14 699 129	613 959	15 313 088	96,0	4,0
2000	14 599 254	632 701	15 231 955	95,8	4,2
2001	14 535 453	657 295	15 192 748	95,7	4,3
2002	14 258 298	718 414	14 976 712	95,2	4,8
2003	14 487 727	793 748	15 281 475	94,8	5,2
2004	14 829 249	840 268	15 669 517	94,6	5,4
2005	14 887 329	863 764	15 751 093	94,5	5,5
2006	15 024 664	902 592	15 927 256	94,3	5,7
2007	15 128 724	974 871	16 103 595	93,9	6,1
2008	15 235 453	1 070 436	16 305 889	93,4	6,6
2009	15 420 120	1 114 098	16 534 218	93,3	6,7
2010	15 491 660	1 175 937	16 667 597	92,9	7,1
2011	15 368 043	1 392 336	16 760 379	91,7	8,3
2012	15 175 199	1 452 163	16 627 362	91,3	8,7
2013	14 995 941	1 449 447	16 445 388	91,2	8,8
2014	14 894 341	1 352 485	16 246 826	91,7	8,3
2015	14 625 587	1 563 820	16 189 407	90,3	9,7
2016	13 925 495	1 460 414	15 385 909	90,5	9,5
2017	13 030 503	1 444 971	14 475 474	90,0	10,0
2018	12 571 375	1 424 017	13 995 392	89,8	10,2

Statistics and Data Warehousing Section 30.1.2019

7.10 Maternity, paternity and parental allowance: Number of days reimbursed to mothers and fathers, 2000–2018



7.11 Payments of maternity, paternity and parental allowance in 2017 by age of recipient

Mother

Age group	Benefit paid out in EUR	Recipients	Share (%) of allowance payments
-24	50 079 028	8 553	27,1
25-29	184 472 245	22 142	100,0
30-34	294 440 330	29 275	159,6
35-39	202 478 849	18 739	109,8
40-	61 647 643	5 678	33,4
Total	793 118 094	84 387	429,9

Total 793,1 million euros

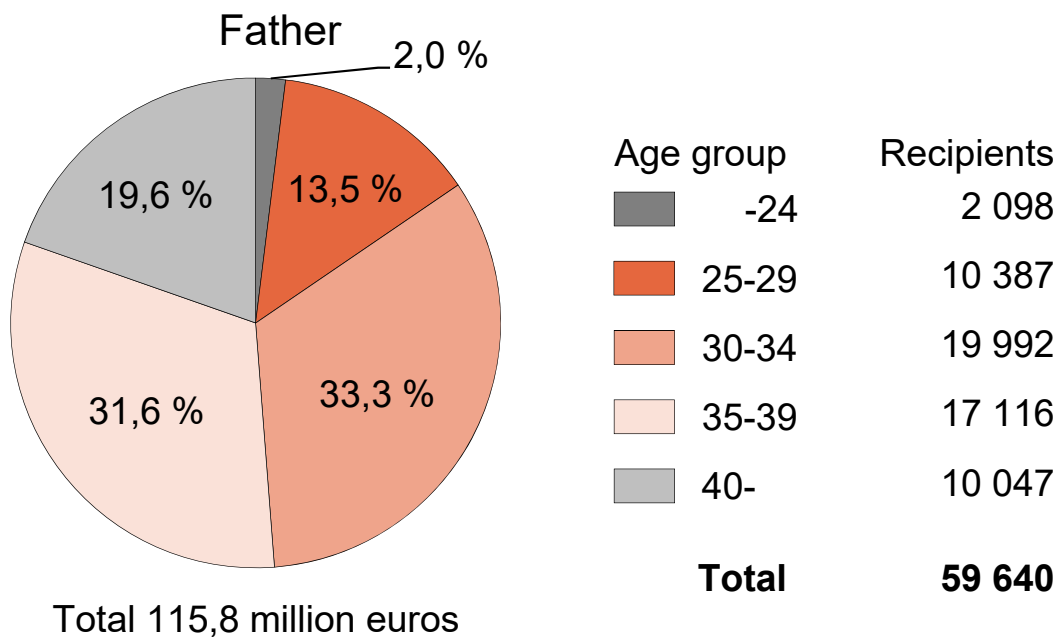
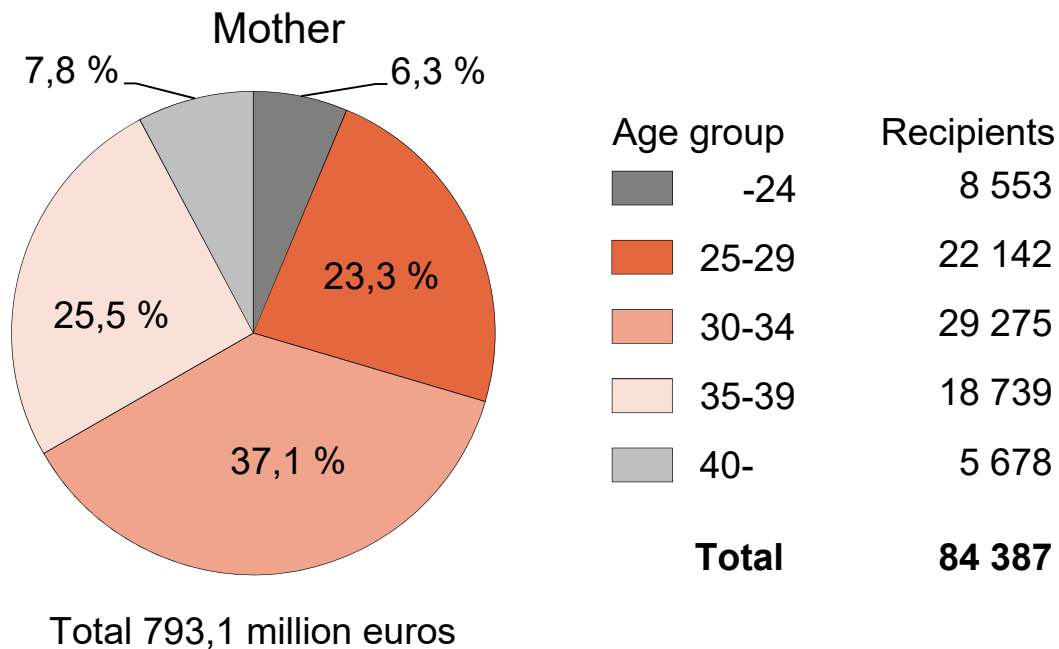
Father

Age group	Benefit paid out in EUR	Recipients	Share (%) of allowance payments
-24	2 266 783	2 098	14,5
25-29	15 665 786	10 387	100,0
30-34	38 557 464	19 992	246,1
35-39	36 556 161	17 116	233,4
40-	22 748 134	10 047	145,2
Total	115 794 328	59 640	739,2

Total 115,8 million euros

Statistics and Data Warehousing Section 30.1.2019

7.11 Payments of maternity, paternity and parental allowance in 2017 by age of recipient

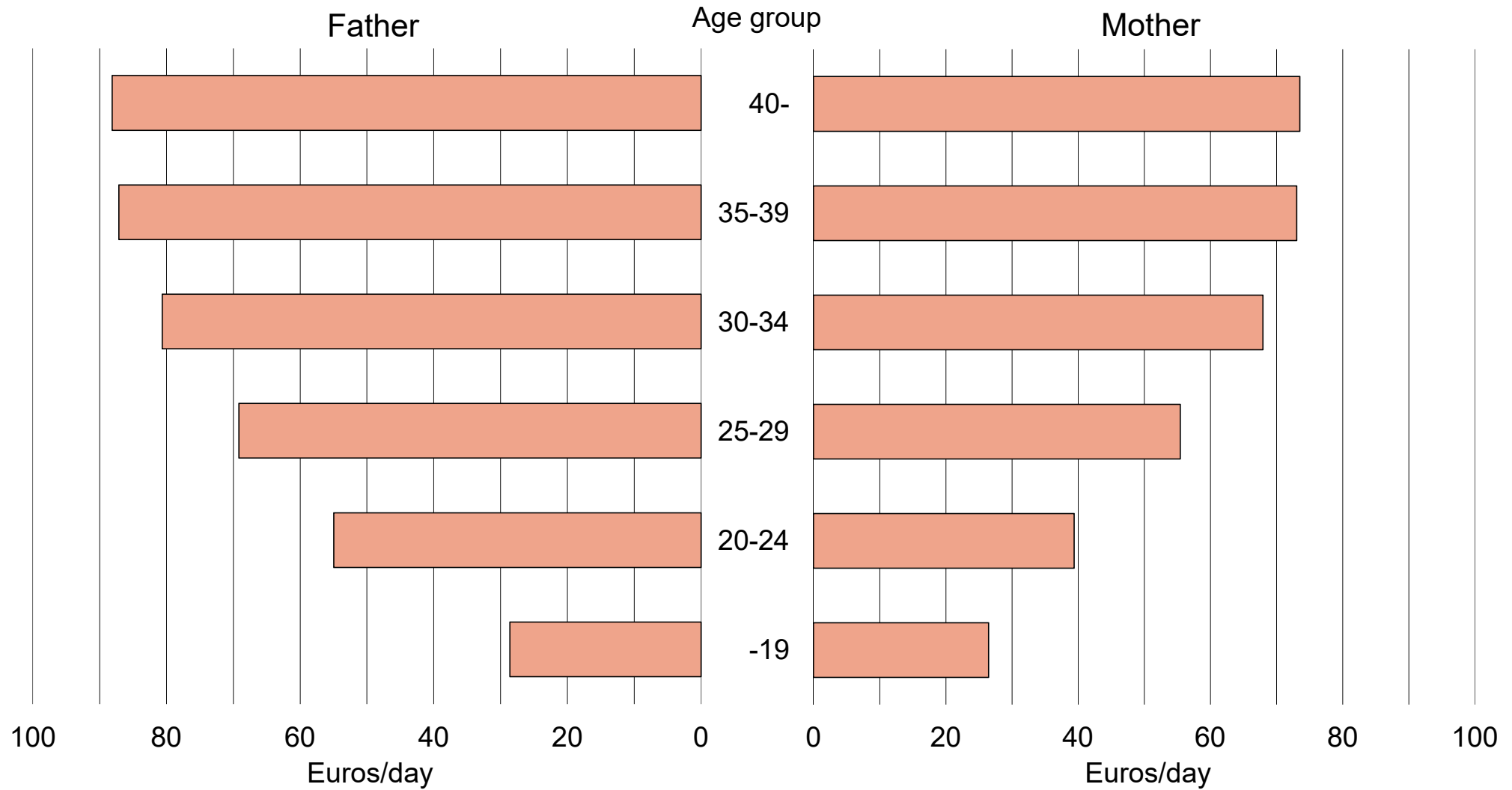


7.12 Average rate of maternity, paternity and parental allowances in 2018

Age group	Euros/day	
	Father	Mother
40-	88,13	73,52
35-39	87,13	73,04
30-34	80,63	67,94
25-29	69,15	55,42
20-24	54,96	39,39
-19	28,61	26,44

Statistics and Data Warehousing Section 30.1.2019

7.12 Average rate of maternity, paternity and parental allowances in 2018



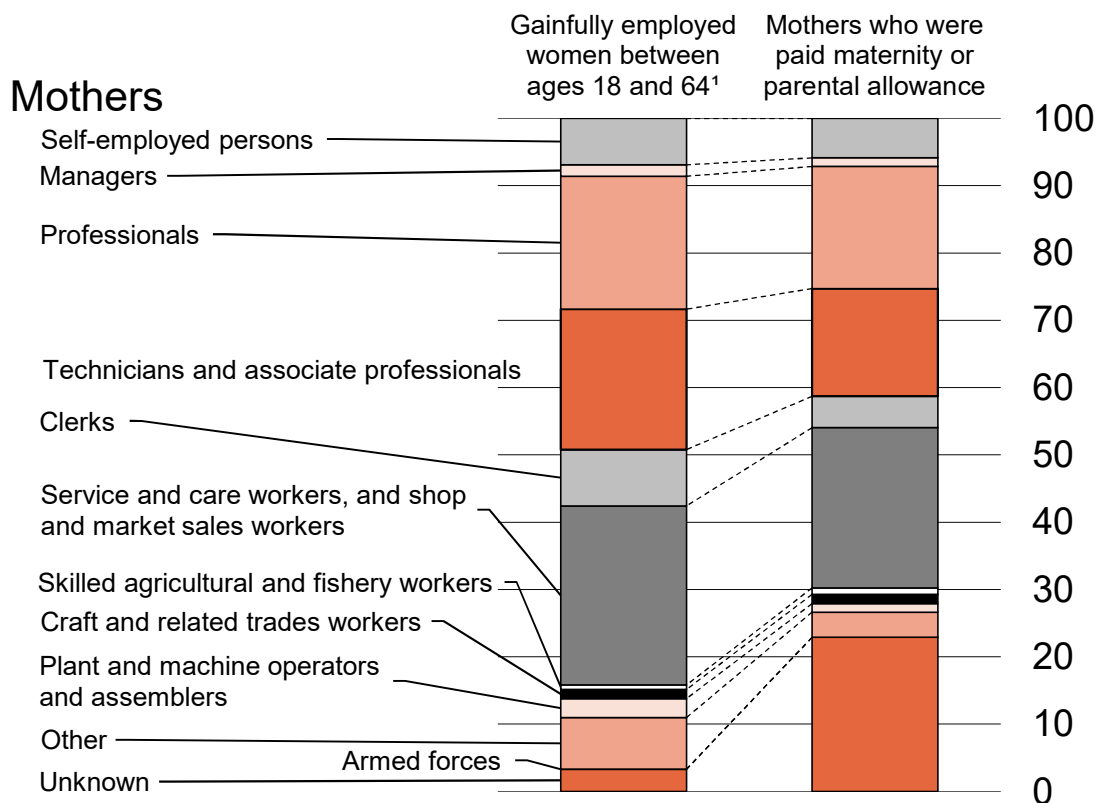
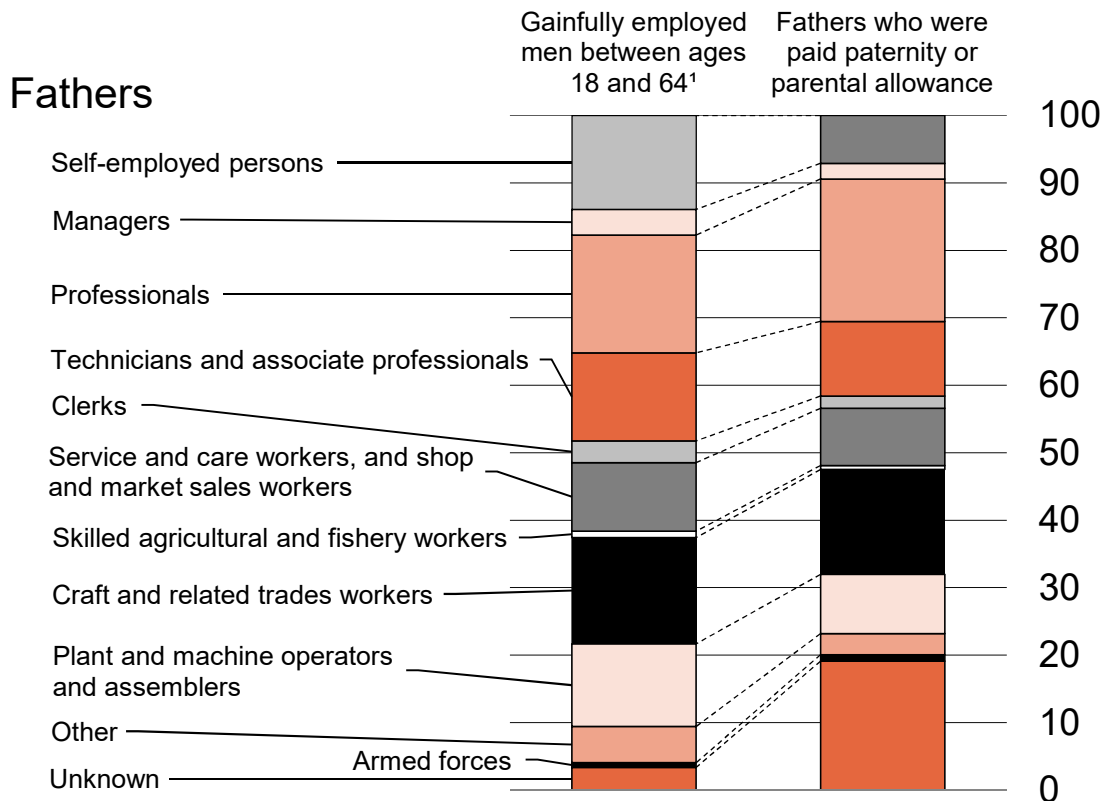
7.13 Occupational status and classification of gainfully employed mothers and fathers who were paid maternity, paternity or parental allowance in 2017

Occupational classification	Fathers		Mothers	
	Gainfully employed men between ages 18 and 64 ¹	Fathers who were paid paternity or parental allowance	Gainfully employed women between ages 18 and 64 ¹	Mothers who were paid maternity or parental allowance
Unknown	3,35	19,08	3,28	22,89
Armed forces	0,70	0,99	0,03	0,04
Other	5,37	3,10	7,66	3,71
Plant and machine operators and assemblers	12,25	8,79	2,82	1,27
Craft and related trades workers	15,77	15,55	1,36	1,37
Skilled agricultural and fishery workers	0,94	0,59	0,66	0,96
Service and care workers, and shop and market sales workers	10,16	8,48	26,63	23,81
Clerks	3,22	1,82	8,37	4,65
Technicians and associate professionals	13,04	11,06	20,86	16,02
Professionals	17,47	21,12	19,74	18,12
Managers	3,79	2,33	1,70	1,29
Self-employed persons	13,94	7,10	6,90	5,86
Wage and salary earners	86,06	92,90	93,10	94,14
Total number of self-employed persons and wage and salary earners	100,00	100,00	100,00	100,00

¹Source: Labour force survey 2015 Statistics Finland

Statistics and Data Warehousing Section 28.9.2018

7.13 Occupational status and classification of gainfully employed mothers and fathers who were paid maternity, paternity or parental allowance in 2017



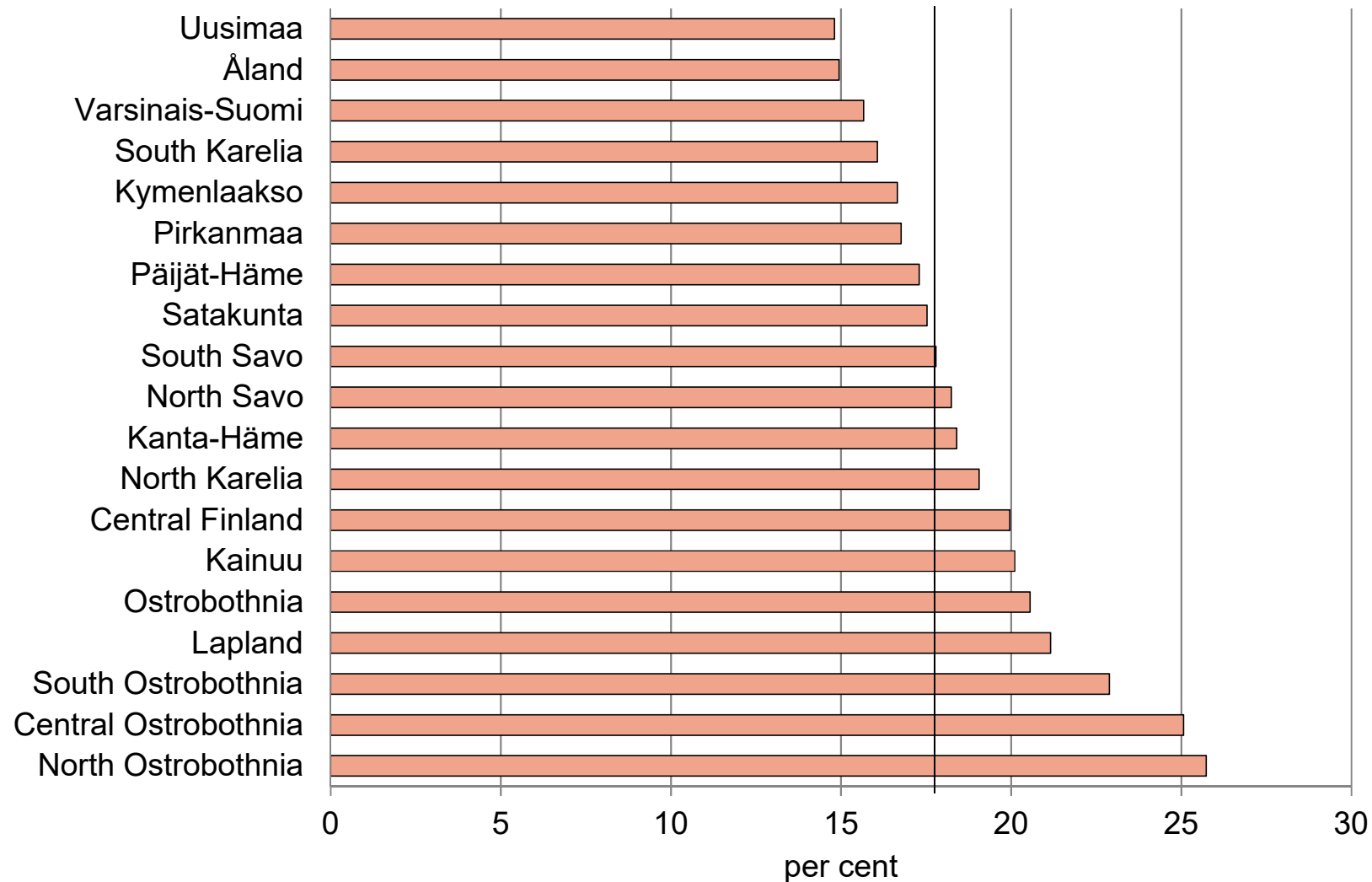
¹Source: Labour force survey 2015 Statistics Finland

7.14 Share of families with three or more children among families in receipt of child benefit, by region, at year-end 2018

<u>Region</u>	<u>per cent</u>
North Ostrobothnia	25,7
Central Ostrobothnia	25,1
South Ostrobothnia	22,9
Lapland	21,2
Ostrobothnia	20,6
Kainuu	20,1
Central Finland	20,0
North Karelia	19,1
Kanta-Häme	18,4
North Savo	18,2
South Savo	17,8
Satakunta	17,5
Päijät-Häme	17,3
Pirkanmaa	16,8
Kymenlaakso	16,7
South Karelia	16,1
Varsinais-Suomi	15,7
Åland	14,9
Uusimaa	14,8
	17,7

Statistics and Data Warehousing Section 30.1.2019

7.14 Share of families with three or more children among families in receipt of child benefit, by region, at year-end 2018



7.15 Share of children in receipt of child maintenance allowance in total child population between ages 0 and 17, by region, at year-end 2017

Region	per cent
Päijät-Häme	12,1
Kymenlaakso	11,8
Satakunta	11,5
North Karelia	11,0
Etelä-Karjala	10,8
Lapland	10,7
South Savo	10,6
Varsinais-Suomi	10,6
Kanta-Häme	10,4
Kainuu	10,4
North Savo	10,4
South Ostrobothnia	10,0
Uusimaa	9,9
Pirkanmaa	9,9
Central Finland	9,9
North Ostrobothnia	8,3
Central Ostrobothnia	7,5
Ostrobothnia	6,2
Åland	4,8
Whole country	9,9

Statistics and Data Warehousing Section 28.9.2018

7.15 Share of children in receipt of child maintenance allowance in total child population between ages 0 and 17, by region, at year-end 2017

