

Further information:
tilastot@kela.fi

Kela's conscript's allowance

10.1 Households and persons receiving conscript's allowance 1972–2019 (20.1.2020)

[Chart](#)

[Data](#)

10.2 Conscript's allowance by recipients 1994–2019 (20.1.2020)

[Chart](#)

[Data](#)

10.3 Expenditure on conscript's allowances 1975–2019 (20.1.2020)

[Chart](#)

[Data](#)

10.4 Cost development of conscript's allowance by allowance category 1995–2019 (20.1.2020)

[Chart](#)

[Data](#)

10.5 Conscript's allowances by average rate of benefit per household 1975–2019 (20.1.2020)

[Chart](#)

[Data](#)

10.6 Number of claims for conscript's allowances processed and average processing time 2010–2019 (20.1.2020)

[Chart](#)

[Data](#)

10.1 Households and persons receiving conscript's allowance 1972–2019

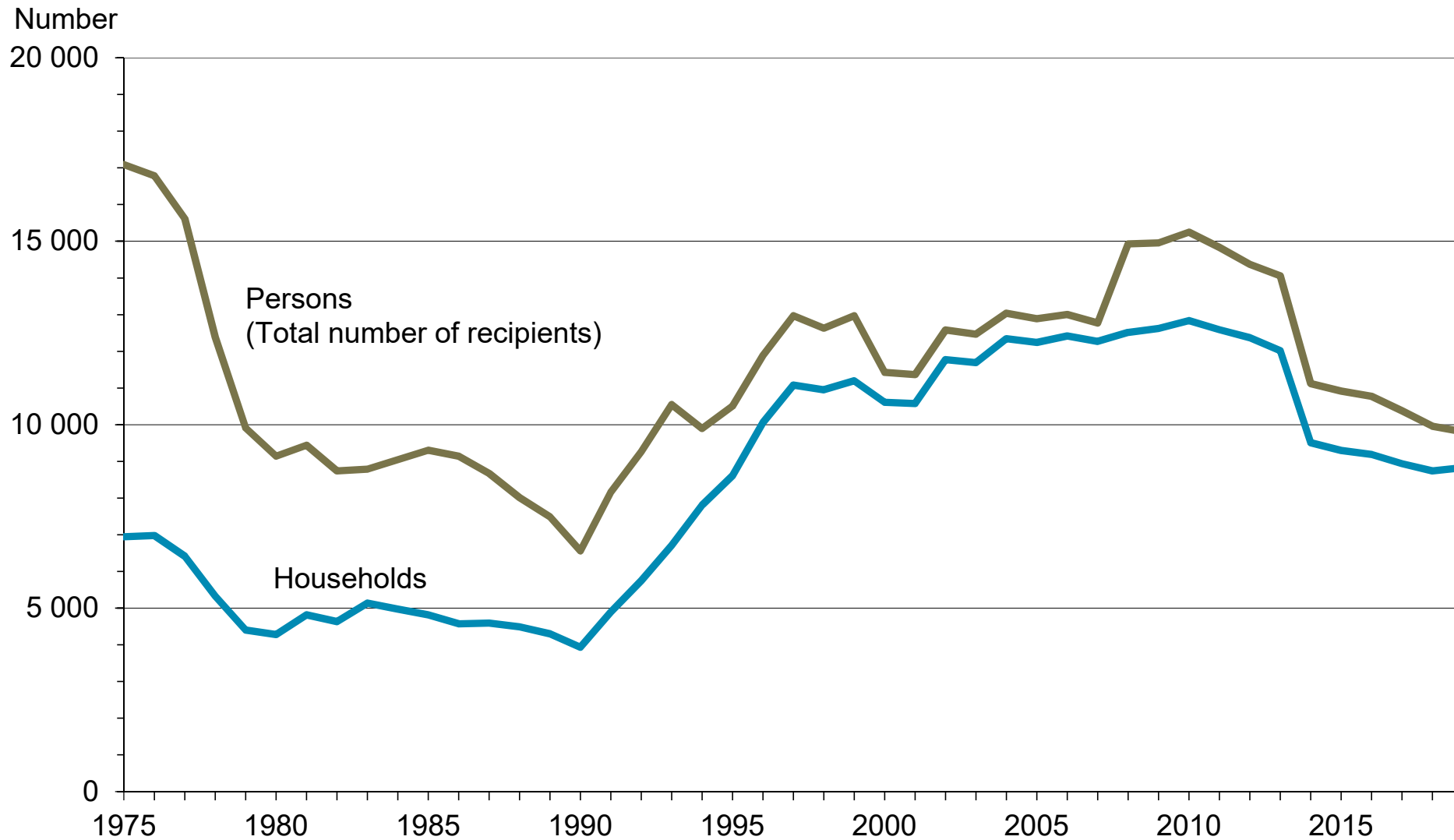
Year	Number	
	Households	Persons
1972	8 607	20 869
1973	7 316	18 256
1974	6 936	16 869
1975	6 948	17 090
1976	6 981	16 784
1977	6 412	15 613
1978	5 329	12 384
1979	4 400	9 912
1980	4 279	9 139
1981	4 815	9 438
1982	4 635	8 741
1983	5 134	8 790
1984	4 974	9 049
1985	4 819	9 308
1986	4 576	9 144
1987	4 590	8 673
1988	4 492	8 015
1989	4 304	7 493
1990	3 934	6 560
1991	4 893	8 165
1992	5 752	9 265
1993	6 710	10 550
1994	7 807	9 897
1995	8 609	10 511
1996	10 063	11 887
1997	11 077	12 968
1998	10 952	12 629
1999	11 198	12 972

Year	Number	
	Households	Persons
2000	10 612	11 425
2001	10 576	11 362
2002	11 775	12 580
2003	11 692	12 469
2004	12 343	13 040
2005	12 242	12 886
2006	12 421	13 003
2007	12 270	12 772
2008	12 515	14 927
2009	12 624	14 955
2010	12 839	15 248
2011	12 591	14 830
2012	12 373	14 369
2013	<u>12 017</u>	<u>14 057</u>
2014	9 512	11 121
2015	9 296	10 918
2016	9 192	10 777
2017	8 938	10 380
2018	8 743	9 960
2019	8 830	9 809

The conscript service period was reduced by 15 days with effect from 1 February 2013.

Source: STAKES (1972–93), The Social Insurance Institution of Finland (Kela)
Section for Analytics and Statistics 20.1.2020

10.1 Households and persons receiving conscript's allowance 1975–2019

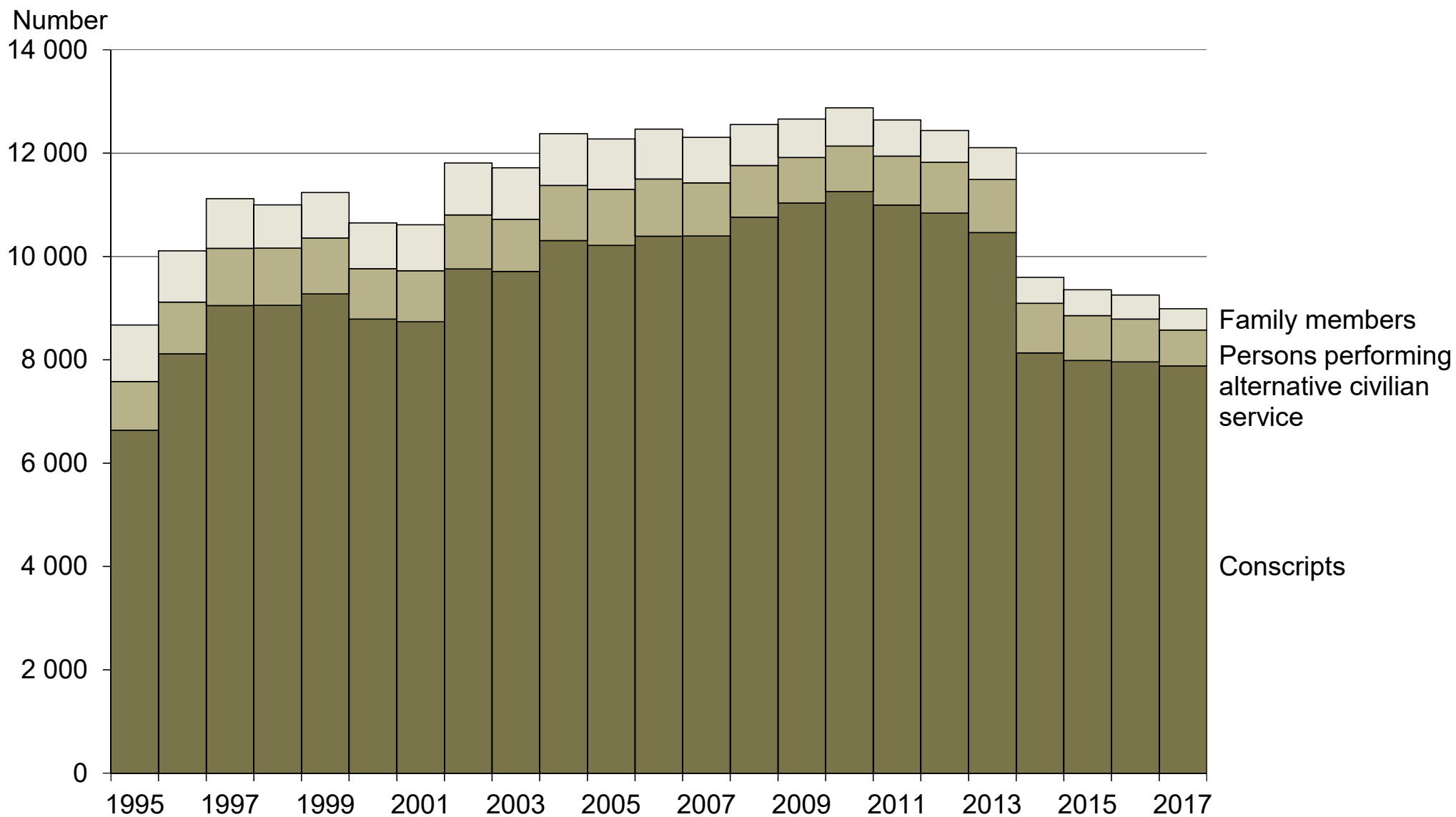


10.2 Conscript's allowance by recipients 1994–2019

Year	Number				
	Persons, total	Households	Conscripts	Persons performing alternative civilian service	Family member
1994	9 897	7 807	5 807	781	1 250
1995	10 511	8 609	6 635	946	1 095
1996	11 887	10 063	8 115	1 003	994
1997	12 968	11 077	9 049	1 110	963
1998	12 629	10 952	9 055	1 109	835
1999	12 972	11 198	9 275	1 083	882
2000	11 425	10 612	8 791	973	888
2001	11 362	10 576	8 735	988	894
2002	12 580	11 775	9 759	1 047	1 006
2003	12 469	11 692	9 713	1 009	996
2004	13 040	12 343	10 311	1 066	1 001
2005	12 886	12 242	10 217	1 084	974
2006	13 003	12 421	10 394	1 105	967
2007	12 772	12 226	10 399	1 028	880
2008	14 927	12 515	10 760	1 001	796
2009	14 955	12 624	11 035	884	742
2010	15 248	12 839	11 256	883	738
2011	14 830	12 591	10 994	951	698
2012	14 369	12 373	10 840	985	616
2013	14 057	12 017	10 465	1 025	616
2014	11 121	9 512	8 133	964	499
2015	10 918	9 296	7 989	867	503
2016	10 777	9 192	7 961	828	464
2017	10 380	8 938	7 881	697	411
2018	9 960	8 743	7 873	582	352
2019	9 809	8 830	8 087	503	301

Section for Analytics and Statistics 20.1.2020

10.2 Conscript's allowance by recipients 1995–2019



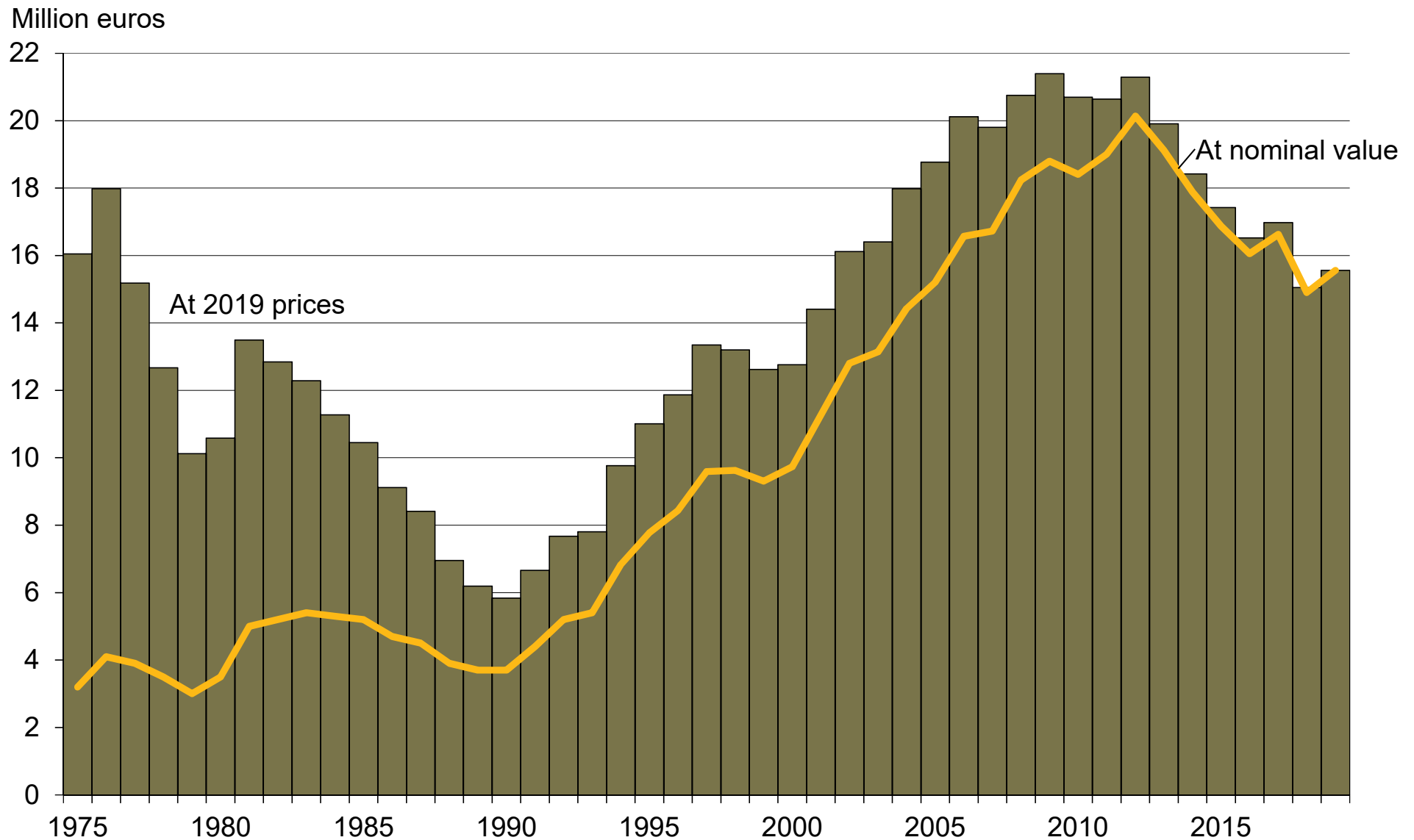
10.3 Expenditure on conscript's allowances 1975–2019

Year	Million euros	
	At 2019 prices	At nominal
1975	16,0	3,2
1976	18,0	4,1
1977	15,2	3,9
1978	12,7	3,5
1979	10,1	3,0
1980	10,6	3,5
1981	13,5	5,0
1982	12,8	5,2
1983	12,3	5,4
1984	11,3	5,3
1985	10,4	5,2
1986	9,1	4,7
1987	8,4	4,5
1988	7,0	3,9
1989	6,2	3,7
1990	5,8	3,7
1991	6,7	4,4
1992	7,7	5,2
1993	7,8	5,4
1994	9,8	6,8
1995	11,0	7,8
1996	11,9	8,4
1997	13,3	9,6
1998	13,2	9,6
1999	12,6	9,3
2000	12,8	9,7
2001	14,4	11,3
2002	16,1	12,8
2003	16,4	13,1
2004	18,0	14,4
2005	18,8	15,2
2006	20,1	16,6
2007	19,8	16,7
2008	20,8	18,2
2009	21,4	18,8
2010	20,7	18,4
2011	20,6	19,0
2012	<u>21,3</u>	<u>20,1</u>
2013	19,9	19,1
2014	18,4	17,9
2015	17,4	16,9
2016	16,5	16,1
2017	17,0	16,6
2018	15,1	14,9
2019	15,6	15,6

The conscript service period was reduced by 15 days with effect from 1 February 2013.

Source: STAKES (1972–93), The Social Insurance Institution of Finland (Kela)
Section for Analytics and Statistics 20.1.2020

10.3 Expenditure on conscript's allowances 1975–2019



10.4 Cost development of conscript's allowance by allowance category 1995–2019

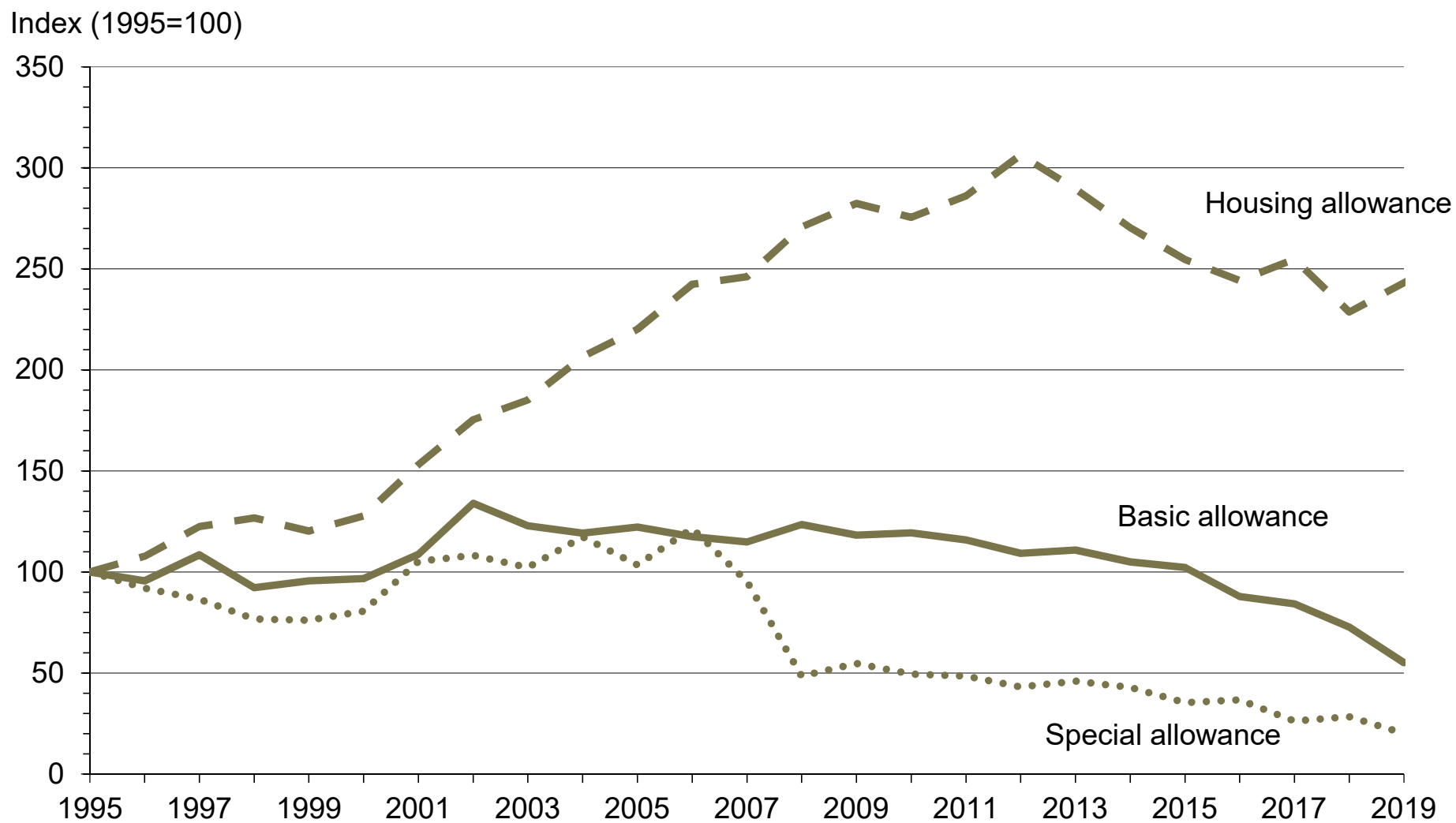
Year	Index (1995=100)		
	Basic allowance	Housing allowance	Special allowance
1995	100,00	100,00	100,00
1996	95,56	107,67	91,91
1997	108,41	122,48	86,48
1998	92,17	126,67	76,66
1999	95,59	120,24	76,11
2000	96,66	127,66	80,53
2001	108,75	153,13	105,17
2002	133,96	175,38	108,26
2003	122,82	185,07	102,20
2004	119,17	206,43	117,31
2005	122,17	220,16	103,48
2006	117,45	242,39	121,51
2007	114,89	246,17	95,16
2008	123,45	270,79	48,50
2009	118,22	282,36	54,65
2010	119,32	275,55	49,42
2011	115,79	286,13	48,41
2012	109,27	306,35	43,05
2013	<u>110,85</u>	<u>289,53</u>	<u>45,89</u>
2014	104,91	270,41	42,88
2015	102,17	254,59	35,37
2016	87,87	244,25	36,75
2017	84,24	254,78	26,18
2018	72,76	228,57	28,35
2019	55,10	243,13	20,08

Year	EUR			
	Basic allowance	Housing allowance	Special allowance	Total
1995	1 173 105	6 103 177	254 192	7 530 474
1996	1 120 999	6 571 087	233 636	7 925 722
1997	1 271 748	7 475 002	219 834	8 966 584
1998	1 081 309	7 731 147	194 862	9 007 318
1999	1 121 396	7 338 277	193 470	8 653 143
2000	1 133 909	7 791 121	204 696	9 129 726
2001	1 275 726	9 346 046	267 336	10 889 108
2002	1 571 497	10 703 490	275 182	12 550 169
2003	1 440 797	11 295 387	259 777	12 995 961
2004	1 397 945	12 598 643	298 189	14 294 777
2005	1 433 158	13 436 748	263 041	15 132 947
2006	1 377 802	14 793 513	308 873	16 480 188
2007	1 347 759	15 024 171	241 889	16 613 819
2008	1 448 157	16 526 902	123 275	18 248 042
2009	1 386 881	17 232 877	138 917	18 885 877
2010	1 399 782	16 817 055	125 623	18 410 004
2011	1 358 378	17 463 084	123 056	19 007 834
2012	1 281 882	18 696 875	109 424	20 138 680
2013	1 300 431	17 670 428	116 658	19 121 761
2014	1 230 735	16 503 898	109 000	17 884 558
2015	1 198 535	15 537 951	89 914	16 869 286
2016	1 030 779	14 907 014	93 423	16 055 929
2017	988 232	15 549 927	66 559	16 624 187
2018	853 600	13 950 028	72 051	14 902 412
2019	646 323	14 838 693	51 037	15 560 804

The conscript service period was reduced by 15 days with effect from 1 February 2013.

Section for Analytics and Statistics 20.1.2020

10.4 Cost development of conscript's allowance by allowance category 1995–2019

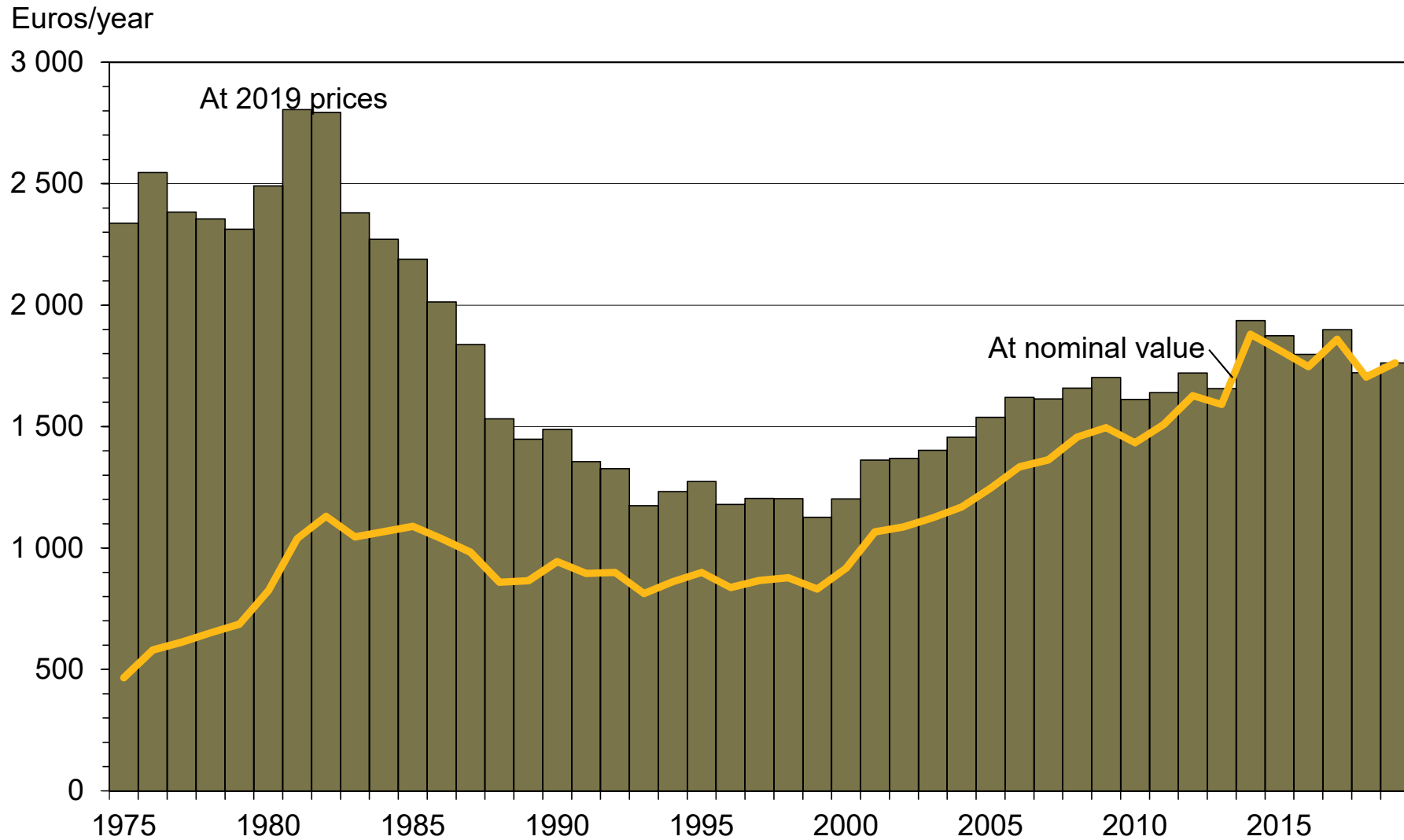


10.5 Conscript's allowances by average rate of benefit per household 1975–2019

Year	Euros/year	
	At 2019 prices	At nominal value
1975	2 337,0	466,0
1976	2 545,6	580,4
1977	2 383,3	612,2
1978	2 355,5	650,7
1979	2 312,2	685,5
1980	2 491,2	823,8
1981	2 804,8	1 039,2
1982	2 794,1	1 131,2
1983	2 379,7	1 046,0
1984	2 271,2	1 067,8
1985	2 188,8	1 089,5
1986	2 012,9	1 038,1
1987	1 838,0	982,9
1988	1 532,3	859,4
1989	1 447,5	865,2
1990	1 488,7	944,0
1991	1 355,9	895,6
1992	1 327,1	899,1
1993	1 173,8	812,3
1994	1 231,9	861,5
1995	1 273,8	899,6
1996	1 179,5	837,7
1997	1 204,6	866,0
1998	1 202,9	877,4
1999	1 126,8	831,0
2000	1 202,3	917,1
2001	1 362,3	1 066,0
2002	1 368,9	1 087,3
2003	1 402,8	1 124,1
2004	1 456,5	1 168,9
2005	1 537,9	1 245,3
2006	1 619,7	1 334,2
2007	1 613,7	1 362,9
2008	1 658,7	1 457,6
2009	1 702,4	1 496,0
2010	1 611,7	1 433,9
2011	1 639,5	1 509,6
2012	1 720,4	1 627,6
2013	1 656,4	1 591,2
2014	1 936,6	1 880,2
2015	1 874,6	1 814,7
2016	1 797,4	1 746,7
2017	1 899,0	1 859,9
2018	1 721,5	1 704,5
2019	1 762,3	1 762,3

Source: STAKES (1972–93), The Social Insurance Institution of Finland (Kela)
Section for Analytics and Statistics 20.1.2020

10.5 Conscript's allowances by average rate of benefit per household 1975–2019



10.6 Number of claims for conscript's allowances processed and average processing time 2010–2019

Months	Number	Days	
		Average	Median
2010-01	3 874	12,80	9
2010-02	2 392	14,50	9
2010-03	2 206	12,10	6
2010-04	1 676	10,00	4
2010-05	1 921	8,80	4
2010-06	3 203	8,60	4
2010-07	3 609	9,80	6
2010-08	2 248	13,20	8
2010-09	1 969	9,70	4
2010-10	1 699	9,50	4
2010-11	1 724	8,90	4
2010-12	2 665	9,50	6
2011-01	3 531	11,70	8
2011-02	2 163	10,50	6
2011-03	1 953	9,30	4
2011-04	1 396	6,90	3
2011-05	1 784	6,80	3
2011-06	2 790	8,60	5
2011-07	3 138	10,20	6
2011-08	2 153	11,20	7
2011-09	1 670	9,00	4
2011-10	1 425	8,30	4
2011-11	1 409	7,80	4
2011-12	2 560	9,80	7
2012-01	3 414	12,00	8
2012-02	2 365	12,30	7
2012-03	1 818	8,40	3
2012-04	1 349	8,60	5
2012-05	1 911	6,90	3
2012-06	2 797	7,80	5
2012-07	3 429	9,30	6
2012-08	1 950	10,90	6
2012-09	1 527	7,60	3
2012-10	1 634	6,70	3
2012-11	1 600	6,20	2
2012-12	2 441	9,30	6
2013-01	3 804	10,50	7
<u>2013-02</u>	<u>1 895</u>	<u>8,80</u>	<u>3</u>
2013-03	1 568	6,20	2
2013-04	1 720	6,70	2
2013-05	1 998	6,30	2
2013-06	3 123	5,90	2
2013-07	2 859	9,00	3
2013-08	1 730	9,50	3
2013-09	1 582	10,00	5
2013-10	1 657	7,50	3
2013-11	1 790	7,50	3
2013-12	2 549	9,80	7

Months	Number	Days	
		Average	Median
2014-01	3 405	14,20	14
2014-02	1 768	10,70	6
2014-03	1 570	8,30	4
2014-04	1 576	9,20	7
2014-05	1 804	8,70	6
2014-06	3 277	9,00	7
2014-07	2 331	15,90	14
2014-08	2 241	15,40	13
2014-09	1 774	10,40	6
2014-10	1 531	8,90	5
2014-11	1 859	7,70	5
2014-12	2 847	9,60	5
2015-01	3 047	12,60	11
2015-02	1 594	12,10	8
2015-03	1 726	8,10	6
2015-04	1 798	7,10	4
2015-05	1 914	7,00	4
2015-06	3 165	8,30	6
2015-07	2 310	10,60	9
2015-08	1 776	11,40	8
2015-09	1 573	8,60	3
2015-10	1 567	7,30	3
2015-11	1 706	5,30	2
2015-12	2 605	9,20	5
2016-01	2 588	17,10	19
2016-02	1 951	10,70	7
2016-03	1 638	9,00	8
2016-04	1 823	7,90	6
2016-05	2 110	7,70	6
2016-06	2 679	9,80	7
2016-07	1 940	18,10	19
2016-08	2 383	15,20	13
2016-09	1 466	8,20	4
2016-10	1 289	9,60	5
2016-11	1 750	8,50	6
2016-12	2 568	11,80	9
2017-01	2 950	15,32	16
2017-02	1 834	13,07	8
2017-03	1 885	8,87	4
2017-04	1 351	10,48	6
2017-05	2 325	9,14	7
2017-06	2 943	11,06	7
2017-07	1 913	14,77	11
2017-08	2 361	18,98	14
2017-09	1 457	10,00	3
2017-10	1 728	10,01	3
2017-11	1 813	5,91	2
2017-12	2 162	8,17	4

Months	Number	Days	
		Average	Median
2018-01	3 033	11,99	10
2018-02	1 578	9,75	4
2018-03	1 468	7,25	3
2018-04	1 647	9,77	4
2018-05	1 899	9,32	4
2018-06	2 483	9,83	6
2018-07	2 442	15,17	6
2018-08	1 899	17,91	7
2018-09	1 636	13,07	4
2018-10	1 799	11,34	4
2018-11	1 822	9,56	4
2018-12	2 186	13,38	10
2019-01	3 451	15,61	15
2019-02	1 820	12,77	4
2019-03	1 827	9,91	5
2019-04	1 876	8,56	3
2019-05	2 000	10,27	4
2019-06	2 434	13,21	5
2019-07	2 556	16,76	10
2019-08	2 112	22,28	19
2019-09	1 768	12,64	3
2019-10	1 855	11,10	3
2019-11	1 701	10,16	4
2019-12	2 347	12,50	8

The conscript service period was reduced by 15 days with effect from 1 February 2013.

Section for Analytics and Statistics 20.1.2020

10.6 Number of claims for conscript's allowances processed and average processing time 2015–2019

