

Further information:
tilastot@kela.fi

Kela's disability benefits

11.1 Recipients of disability benefits, 1990–2019 (29.1.2020)

[Chart](#) [Data](#)

11.2 Share of population receiving disability benefits, 1990–2019 (29.1.2020)

[Chart](#) [Data](#)

11.3 Share of population receiving disability benefits by region at year end 2019 (29.1.2020)

[Chart](#) [Data](#)

11.4 Disability benefits paid out, 1990–2019 (29.1.2020)

[Chart](#) [Data](#)

11.5 Recipients of disability allowance for persons under 16 by level of benefit at year end 2019 (29.1.2020)

[Chart](#) [Data](#)

11.6 Recipients of disability allowance for persons under 16 by diagnosis, 1990–2019 (29.1.2020)

[Chart](#) [Data](#)

11.7 Recipients of disability allowance for persons under 16 and aged 16 and over by age group at year end 2019 (29.1.2020)

[Chart](#) [Data](#)

11.8 New awards of disability allowance for persons under 16 by diagnostic category, 2019 (29.1.2020)

[Chart](#) [Data](#)

11.9 Recipients of disability allowance for persons aged 16 and over by level of benefit, 2019 (29.1.2020)

[Chart](#) [Data](#)

11.10 Recipients of disability allowance for persons aged 16 and over by diagnosis, 1990–2019 (29.1.2020)

[Chart](#) [Data](#)

Further information:
tilastot@kela.fi

Disability benefits

11.11 New awards of disability allowance for persons aged 16 and over by diagnostic category, 2019 (29.1.2020)

[Chart](#)

[Data](#)

11.12 Recipients of care allowance for pensioners by level of benefit, 2019 (29.1.2020)

[Chart](#)

[Data](#)

11.13 Recipients of care allowance for pensioners by diagnosis, 1990–2019 (29.1.2020)

[Chart](#)

[Data](#)

11.14 Recipients of care allowance for pensioners by age group, 2019 (29.1.2020)

[Chart](#)

[Data](#)

11.15 New awards of care allowance for pensioners by diagnostic category, 2019 (29.1.2020)

[Chart](#)

[Data](#)

11.16 Disability benefits and share of fixed-term benefits at year end 2019 (29.1.2020)

[Chart](#)

[Data](#)

11.17 Persons entitled to interpreting services for the disabled by type of recipient at year end 2019 (29.1.2020)

[Chart](#)

[Data](#)

11.1 Recipients of disability benefits, 1990–2019

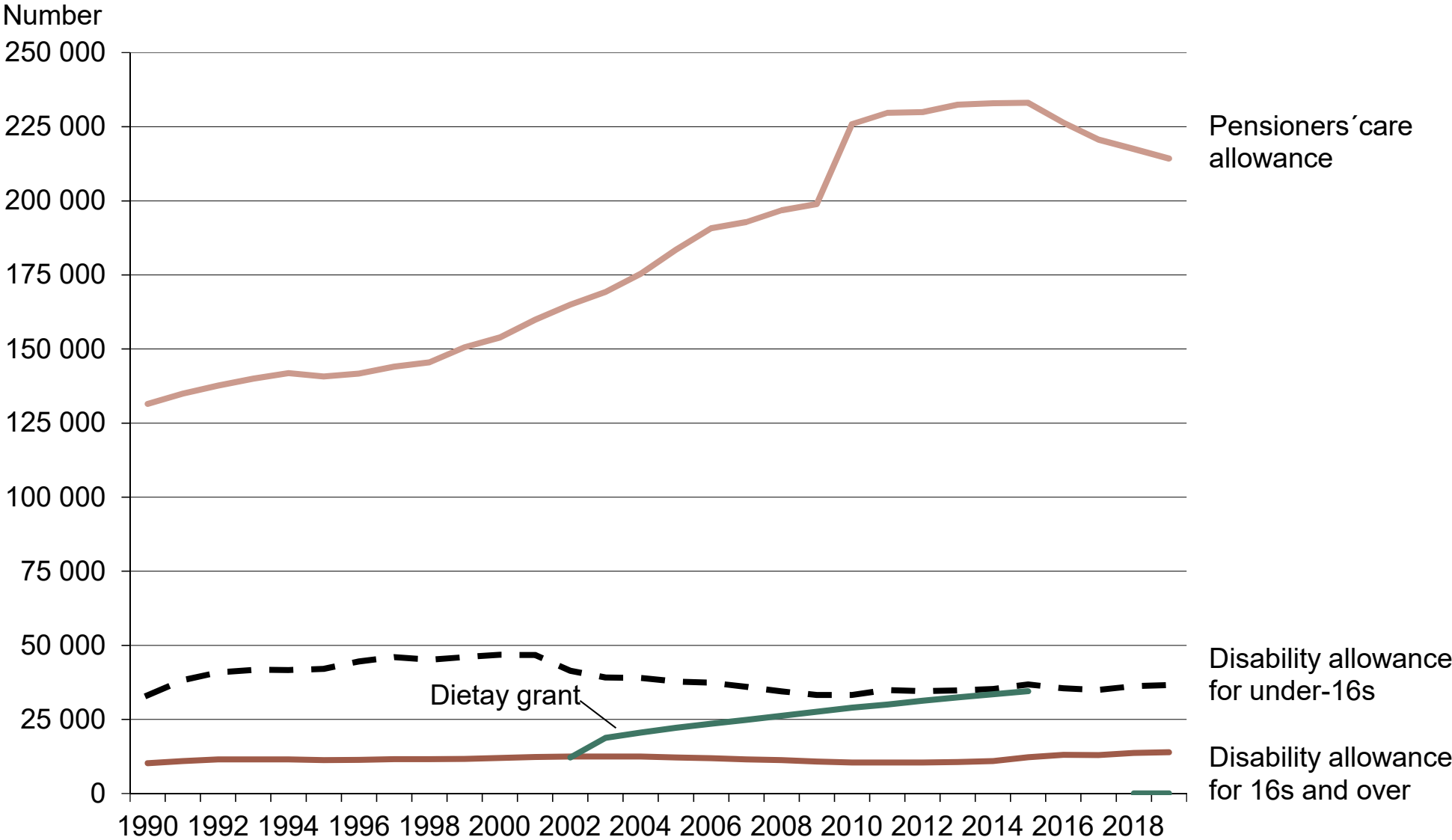
Year	Number				
	Disability allowance for under-16s	Disability allowance for 16s and over	Pensioners' care allowance	Dietary grant	Total ¹⁾
1990	33 148	10 217	131 504	.	..
1991	38 291	10 971	134 912	.	..
1992	40 846	11 499	137 670	.	..
1993	41 740	11 533	140 030	.	..
1994	41 643	11 504	141 863	.	..
1995	42 098	11 305	140 754	.	..
1996	44 564	11 368	141 674	.	..
1997	45 991	11 566	144 046	.	..
1998	45 164	11 561	145 516	.	..
1999	46 026	11 693	150 573	.	..
2000	46 805	12 020	153 896	.	..
2001	46 749	12 300	159 920	.	..
2002	41 454	12 476	164 961	12 141	..
2003	39 173	12 468	169 231	18 758	..
2004	39 012	12 453	175 395	20 596	..
2005	37 793	12 167	183 469	22 192	..
2006	37 365	11 903	190 722	23 553	..
2007	35 991	11 481	192 833	24 858	..
2008	34 452	11 238	196 828	26 235	266 814
2009	33 243	10 828	198 882	27 591	268 518
2010	33 263	10 443	225 887	28 963	296 324
2011	34 955	10 441	229 693	30 021	302 780
2012	34 525	10 504	229 935	31 283	303 842
2013	34 821	10 599	232 418	32 447	307 809
2014	35 289	10 925	232 928	33 514	310 128
2015	36 833	12 280	233 084	34 520	314 114
2016	35 556	13 073	226 384	-	274 945
2017	34 931	12 997	220 667	-	268 537
2018	36 206	13 693	217 515		267 364
2019	36 595	13 911	214 246		264 714

N.B. Dietary grant can be paid at the same time with pensioners' care allowance or disability allowance for 16s and over.

¹⁾ Starting from the beginning of 2008, the statistics reflect the total number of disability benefit recipients, with each recipient represented only once, even though dietary grant can be paid at the same time as disability allowance for 16s and over or pensioners' care allowance.

Section for Analytics and Statistics 29.1.2020

11.1 Recipients of disability benefits, 1990–2019



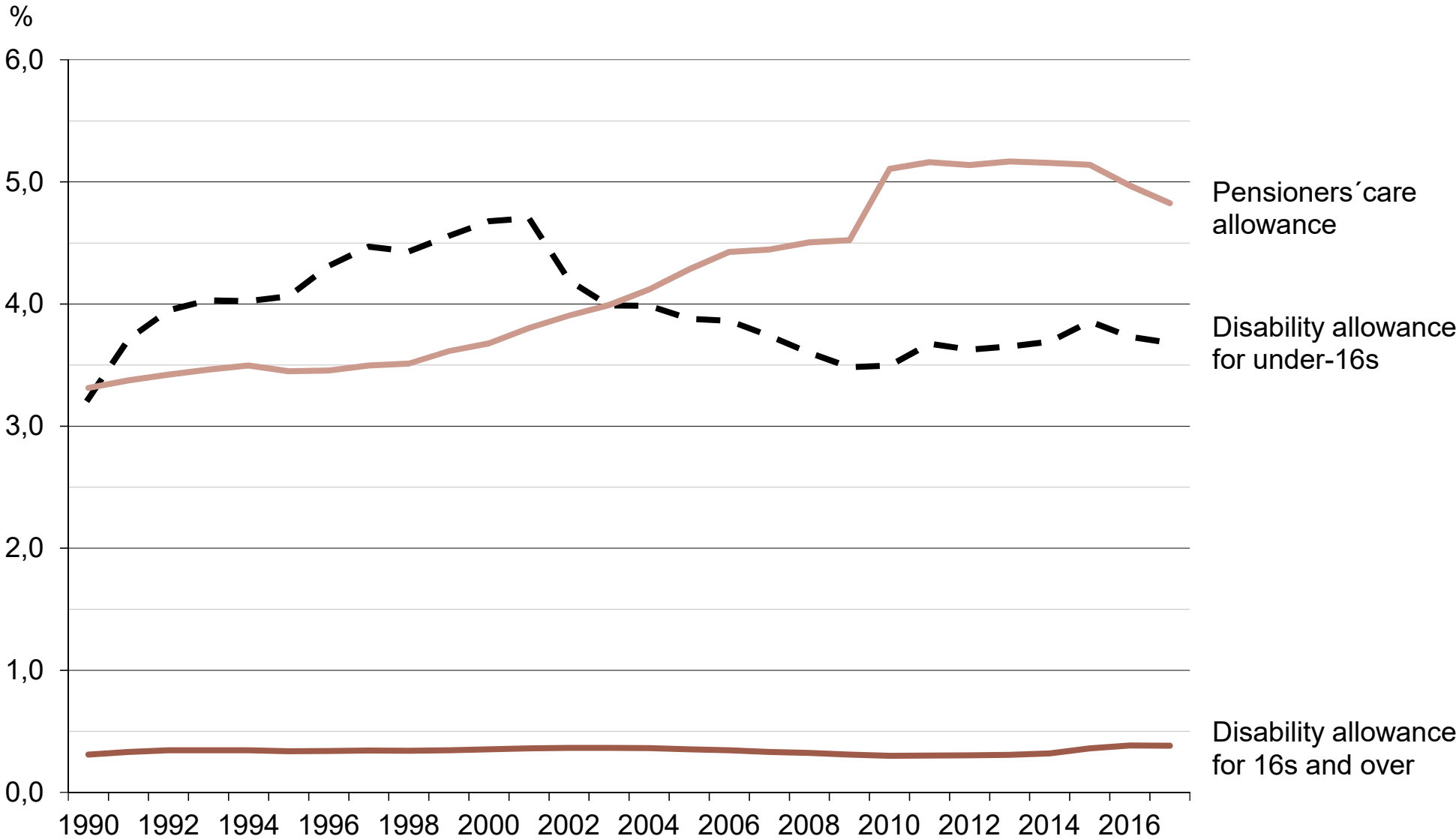
N.B. Dietary grant can be paid at the same time with pensioners' care allowance or disability allowance for 16s and over.

11.2 Share of population receiving disability benefits, 1990–2019

Year	%			Insured population		
	Disability allowance for under-16s	Disability allowance for 16s and over	Pensioners'c are allowance	0 to 15-year-olds	16 to 64-year-olds	Over 16-year-olds
1990	3,2	0,3	3,3	1 028 277	3 296 081	3 969 849
1991	3,7	0,3	3,4	1 031 858	3 311 636	3 997 167
1992	3,9	0,3	3,4	1 034 231	3 326 168	4 022 204
1993	4,0	0,3	3,5	1 035 380	3 336 229	4 043 121
1994	4,0	0,3	3,5	1 034 975	3 336 817	4 057 175
1995	4,1	0,3	3,4	1 036 307	3 348 576	4 081 747
1996	4,3	0,3	3,5	1 033 630	3 356 324	4 100 466
1997	4,5	0,3	3,5	1 029 029	3 366 985	4 120 671
1998	4,4	0,3	3,5	1 019 397	3 382 824	4 143 021
1999	4,6	0,3	3,6	1 009 633	3 396 198	4 164 716
2000	4,7	0,4	3,7	1 000 683	3 405 824	4 184 297
2001	4,7	0,4	3,8	994 034	3 416 589	4 205 407
2002	4,2	0,4	3,9	988 659	3 422 842	4 223 083
2003	4,0	0,4	4,0	982 276	3 415 483	4 239 800
2004	4,0	0,4	4,1	979 401	3 426 465	4 257 287
2005	3,9	0,4	4,3	973 836	3 440 725	4 281 753
2006	3,9	0,3	4,4	967 614	3 440 560	4 309 110
2007	3,7	0,3	4,4	962 273	3 462 997	4 338 055
2008	3,6	0,3	4,5	956 916	3 477 271	4 369 193
2009	3,5	0,3	4,5	954 437	3 486 642	4 396 910
2010	3,5	0,3	5,1	951 908	3 482 523	4 423 393
2011	3,7	0,3	5,2	950 943	3 470 893	4 450 395
2012	3,6	0,3	5,1	952 071	3 456 975	4 475 027
2013	3,7	0,3	5,2	953 520	3 442 076	4 498 438
2014	3,7	0,3	5,2	956 215	3 426 464	4 517 940
2015	3,9	0,4	5,1	954 934	3 412 169	4 535 442
2016	3,7	0,4	5,0	952 857	3 404 822	4 555 188
2017	3,7	0,4	4,8	948 785	3 392 330	4 572 115
2018	3,8	0,4	4,7	941 713	3 382 122	4 587 443
2019	3,9	0,4	4,7	932 182	3 375 315	4 607 324

Section for Analytics and Statistics 29.1.2020

11.2 Share of population receiving disability benefits, 1990–2019



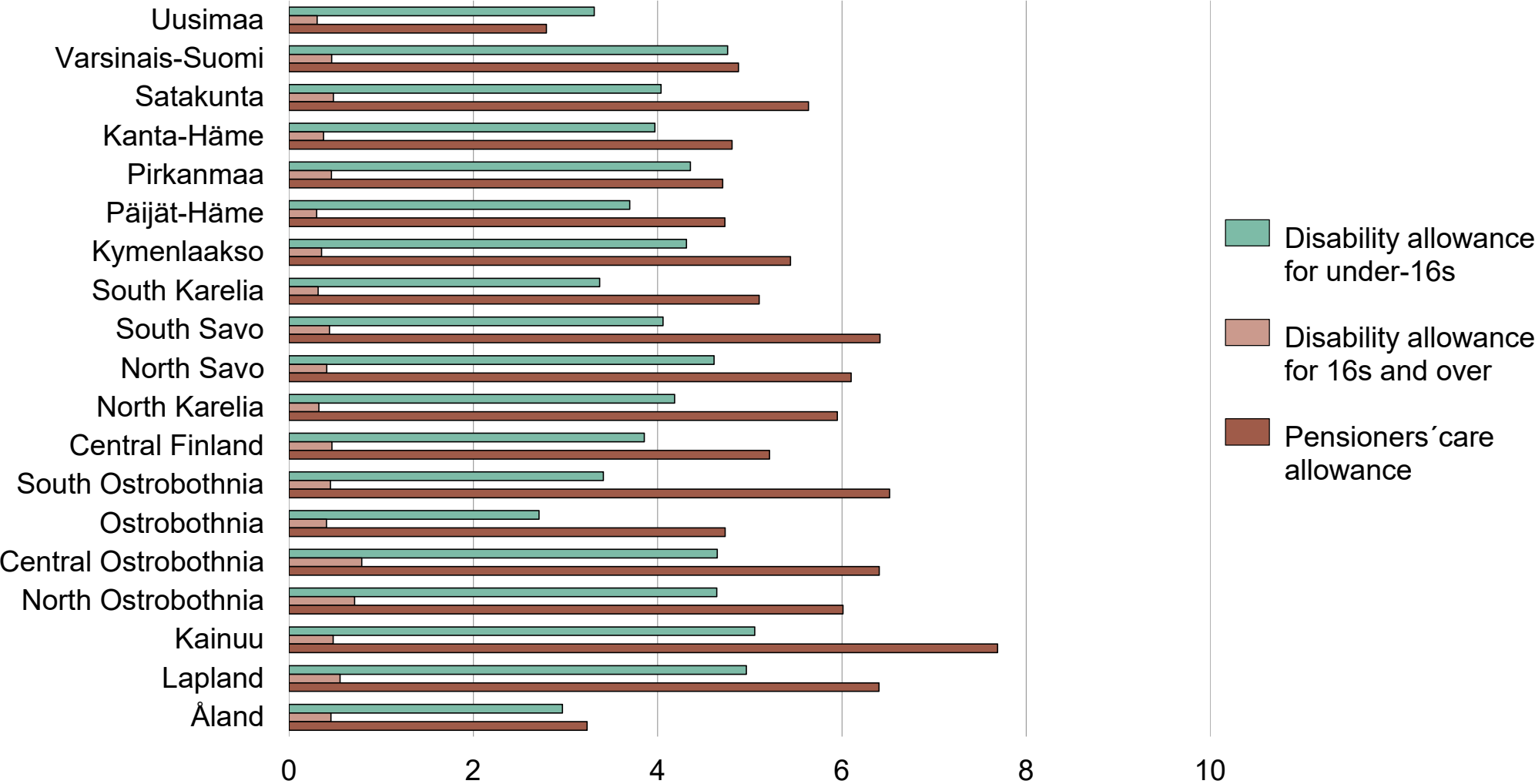
11.3 Share of population receiving disability benefits by region at year end 2019

Region	%			Recipients of disability benefits 2019*			Insured population		
	Disability allowance for under-16s	Disability allowance for 16s and over	Pensioners' care allowance	Disability allowance for under-16s	Disability allowance for 16s and over	Pensioners' care allowance	0 to 15-year-olds	16 to 64-year-olds	Over 16-year-olds
01 Uusimaa	3,3	0,3	2,8	9 810	3 348	39 154	296 223	1 103 516	1 401 685
02 Varsinais-Suomi	4,8	0,5	4,9	3 610	1 350	19 744	75 861	292 856	404 755
04 Satakunta	4,0	0,5	5,6	1 367	597	10 323	33 860	124 206	183 095
05 Kanta-Häme	4,0	0,4	4,8	1 114	373	6 881	28 061	99 931	143 148
06 Pirkanmaa	4,4	0,5	4,7	3 790	1 467	20 296	87 034	319 082	431 395
07 Päijät-Häme	3,7	0,3	4,7	1 146	346	7 991	31 002	115 827	168 940
08 Kymenlaakso	4,3	0,4	5,4	1 066	348	7 997	24 725	98 830	146 944
09 South Karelia	3,4	0,3	5,1	616	235	5 594	18 278	74 623	109 624
10 South Savo	4,1	0,4	6,4	785	346	7 904	19 337	79 085	123 247
11 North Savo	4,6	0,4	6,1	1 764	593	12 599	38 244	144 938	206 534
12 North Karelia	4,2	0,3	6,0	1 004	306	8 181	23 991	95 047	137 466
13 Central Finland	3,9	0,5	5,2	1 782	768	11 948	46 217	164 956	229 125
14 South Ostrobothnia	3,4	0,4	6,5	1 142	481	10 125	33 477	107 524	155 375
15 Ostrobothnia	2,7	0,4	4,7	895	429	6 993	32 986	105 918	147 736
16 Central Ostrobothnia	4,6	0,8	6,4	634	305	3 498	13 646	38 695	54 619
17 North Ostrobothnia	4,6	0,7	6,0	3 939	1 758	19 729	84 882	247 117	328 191
18 Kainuu	5,1	0,5	7,7	546	196	4 734	10 801	40 959	61 565
19 Lapland	5,0	0,6	6,4	1 403	576	9 555	28 263	104 329	149 213
21 Åland	3,0	0,5	3,2	157	81	798	5 294	17 876	24 667
Whole country	3,9	0,4	4,7	36 595	13 911	214 246	932 182	3 375 315	4 607 324

* At year end

Section for Analytics and Statistics 29.1.2020

11.3 Share of population receiving disability benefits by region at year end 2019



11.4 Disability benefits paid out, 1990–2019

Year	Million euros (at 2019 prices)				
	Disability allowance for under-16s	Disability allowance for 16s and over	Pensioners'c are allowance	Dietary grant	Total
1990	78,3	37,6	186,3	.	302,2
1991	89,8	39,8	217,4	.	347,0
1992	94,9	41,0	245,2	.	381,1
1993	93,1	39,6	248,7	.	381,4
1994	92,1	38,5	247,2	.	377,8
1995	93,5	37,5	246,1	.	377,1
1996	97,1	36,6	244,8	.	378,5
1997	99,1	36,4	246,0	.	381,5
1998	94,9	36,2	245,1	.	376,2
1999	97,0	36,5	256,2	.	389,8
2000	96,7	36,8	257,7	.	391,2
2001	100,7	38,2	273,0	.	411,9
2002	95,9	39,6	283,3	1,0	419,8
2003	92,0	40,0	290,5	6,2	428,7
2004	92,4	40,0	301,0	6,4	439,7
2005	89,7	39,2	311,5	6,8	447,2
2006	88,4	38,2	324,3	7,1	458,0
2007	85,9	37,5	329,7	7,4	460,4
2008	79,9	35,6	331,3	7,4	454,3
2009	79,6	36,0	352,8	7,8	476,1
2010	78,4	35,0	450,5	8,1	572,0
2011	78,1	33,9	457,1	8,2	577,3
2012	79,5	34,4	464,8	8,3	587,0
2013	81,8	35,7	490,0	9,5	617,0
2014	85,0	37,3	499,2	9,7	631,3
2015	87,8	38,5	503,7	10,1	640,0
2016	84,2	39,1	474,6	0,0	597,9
2017	79,3	37,3	449,9	0,0	566,5
2018	78,1	37,0	447,9	0,0	563,0
2019	77,0	36,4	437,9	0,0	551,4

Section for Analytics and Statistics 29.1.2020

11.4 Disability benefits paid out, 1990–2019

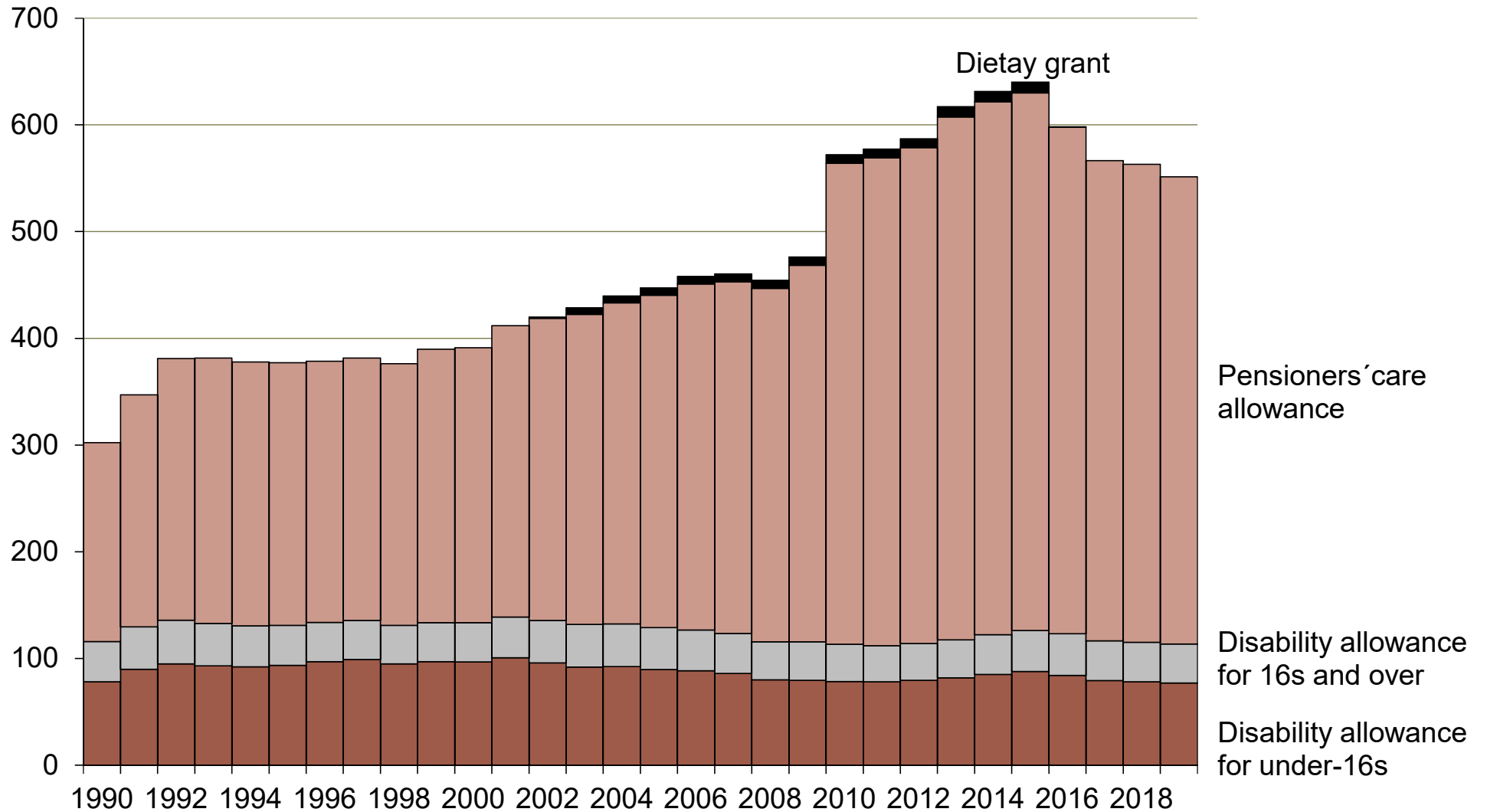
Year	Million euros (at nominal value)				
	Disability allowance for under-16s	Disability allowance for 16s and over	Pensioners'c are allowance	Dietary grant	Total
1990	49,6	23,9	118,1	.	191,6
1991	59,3	26,3	143,6	.	229,2
1992	64,3	27,8	166,1	.	258,2
1993	64,5	27,4	172,1	.	264,0
1994	64,4	26,9	172,9	.	264,2
1995	66,1	26,5	173,8	.	266,3
1996	69,0	26,0	173,9	.	268,8
1997	71,2	26,2	176,8	.	274,2
1998	69,2	26,4	178,8	.	274,4
1999	71,6	27,0	188,9	.	287,4
2000	73,8	28,1	196,6	.	298,4
2001	78,8	29,9	213,6	.	322,3
2002	76,2	31,4	225,0	0,8	333,4
2003	73,7	32,1	232,8	5,0	343,5
2004	74,1	32,1	241,5	5,2	352,9
2005	72,7	31,7	252,2	5,5	362,1
2006	72,8	31,5	267,1	5,9	377,3
2007	72,6	31,6	278,5	6,2	388,9
2008	70,2	31,3	291,1	6,5	399,2
2009	69,9	31,6	310,0	6,9	418,4
2010	69,7	31,1	400,8	7,2	508,9
2011	71,9	31,2	420,9	7,5	531,5
2012	75,2	32,6	439,8	7,8	555,3
2013	78,6	34,3	470,7	9,1	592,7
2014	82,6	36,2	484,7	9,4	612,9
2015	85,0	37,2	487,6	9,7	619,6
2016	81,9	38,0	461,2	0,0	581,1
2017	77,7	36,5	440,7	0,0	554,9
2018	77,3	36,6	443,5	0,0	557,4
2019	77,0	36,4	437,9	0,0	551,4

Section for Analytics and Statistics 29.1.2020

11.4 Disability benefits paid out, 1990–2019

(at 2019 prices)

Million euros

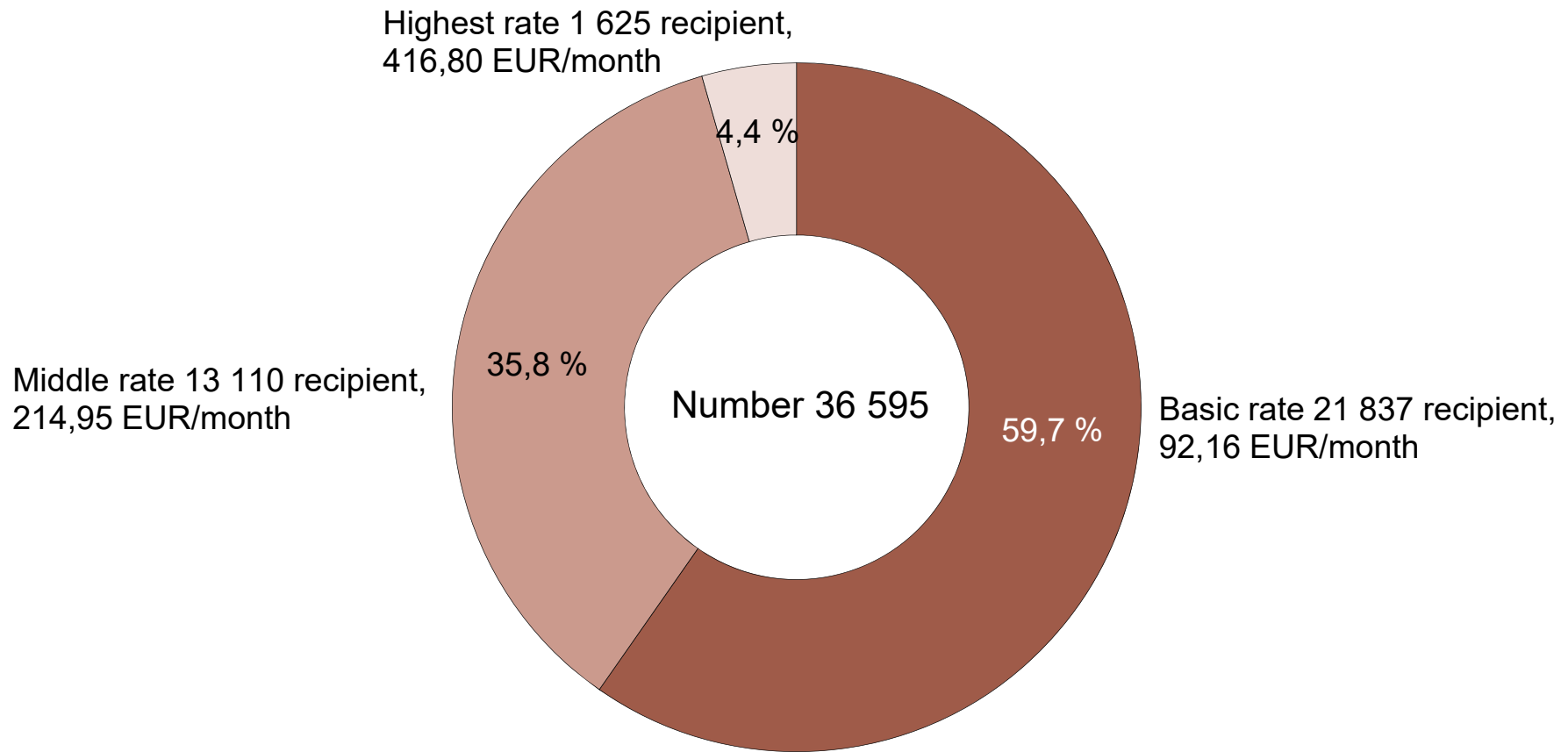


11.5 Recipients of disability allowance for persons under 16 by level of benefit at year end 2019

Benefit level	Number	EUR/month
Basic rate	21 837	92,16
Middle rate	13 110	214,95
Highest rate	1 625	416,80
Data not available	23	113,51
Total	36 595	150,58

Section for Analytics and Statistics 29.1.2020

11.5 Recipients of disability allowance for persons under 16 by level of benefit at year end 2019



11.6 Recipients of disability allowance for persons under 16 by diagnosis, 1990–2019

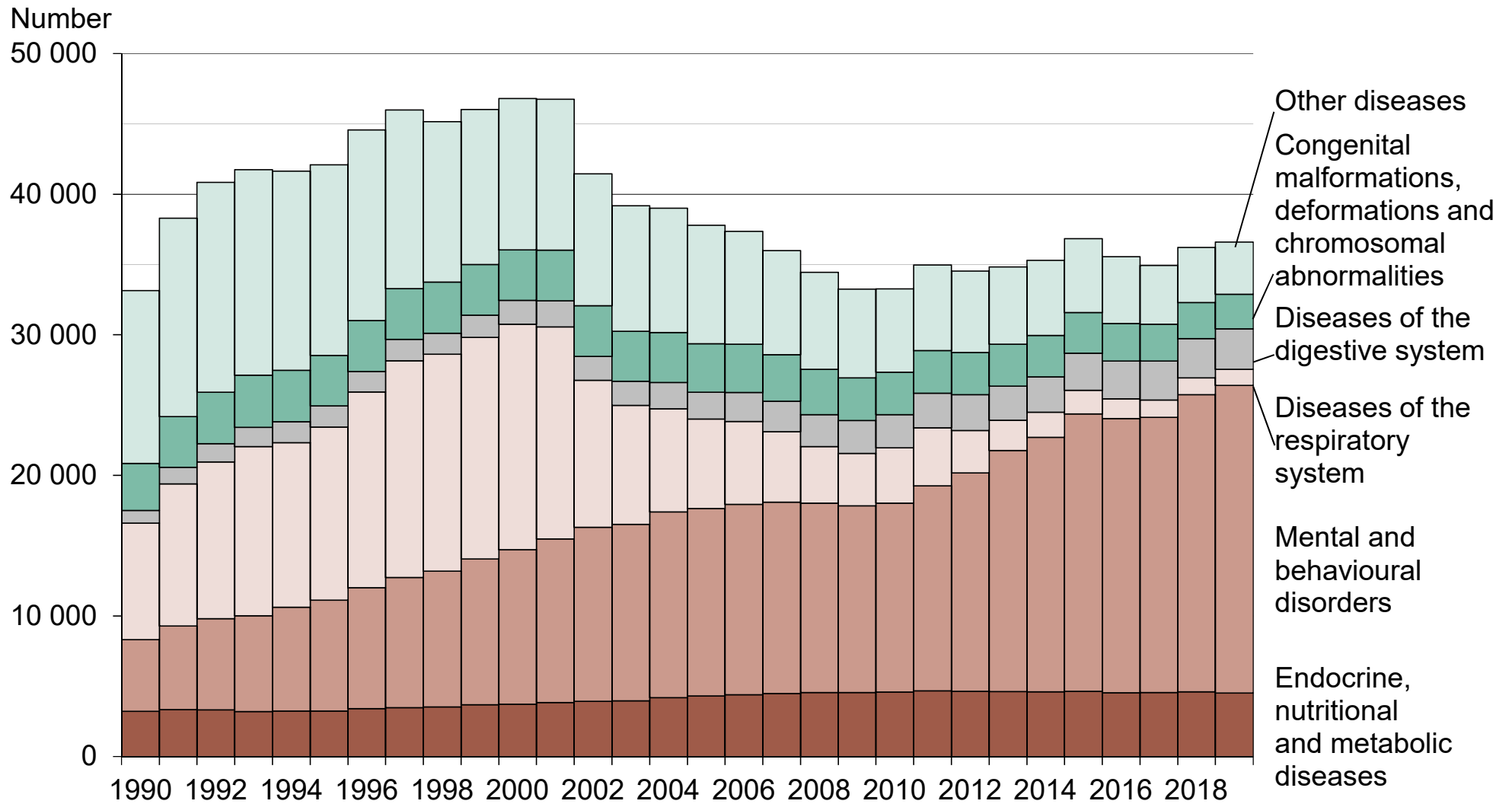
Year*	Number						Total
	Endocrine, nutritional and metabolic diseases	Mental and behavioural disorders	Diseases of the respiratory system	Diseases of the digestive system	Congenital malformations, deformations and chromosomal abnormalities	Other diseases	
1990	3 211	5 104	8 281	900	3 357	12 295	33 148
1991	3 335	5 952	10 111	1 167	3 617	14 109	38 291
1992	3 318	6 486	11 150	1 291	3 666	14 935	40 846
1993	3 202	6 799	12 038	1 382	3 703	14 616	41 740
1994	3 235	7 379	11 706	1 501	3 653	14 169	41 643
1995	3 235	7 884	12 305	1 522	3 591	13 561	42 098
1996	3 394	8 612	13 923	1 454	3 634	13 547	44 564
1997	3 466	9 272	15 417	1 513	3 622	12 701	45 991
1998	3 527	9 652	15 444	1 480	3 646	11 415	45 164
1999	3 671	10 373	15 761	1 593	3 599	11 029	46 026
2000	3 721	10 989	16 045	1 695	3 596	10 759	46 805
2001	3 840	11 624	15 101	1 858	3 595	10 731	46 749
2002	3 927	12 384	10 450	1 708	3 598	9 387	41 454
2003	3 957	12 560	8 457	1 711	3 556	8 932	39 173
2004	4 174	13 217	7 338	1 872	3 554	8 857	39 012
2005	4 308	13 330	6 371	1 901	3 458	8 425	37 793
2006	4 396	13 533	5 898	2 064	3 429	8 045	37 365
2007	4 476	13 616	5 008	2 171	3 311	7 409	35 991
2008	4 553	13 461	4 035	2 270	3 226	6 907	34 452
2009	4 552	13 279	3 723	2 337	3 043	6 309	33 243

Year*	Number						Total
	Endocrine, nutritional and metabolic diseases	Mental and behavioural disorders	Diseases of the respiratory system	Diseases of the digestive system	Congenital malformations, deformations and chromosomal abnormalities	Other diseases	
2010	4 573	13 453	3 930	2 362	3 017	5 928	33 263
2011	4 668	14 588	4 130	2 453	3 034	6 082	34 955
2012	4 638	15 535	3 015	2 544	3 000	5 793	34 525
2013	4 614	17 151	2 157	2 415	2 987	5 497	34 821
2014	4 590	18 113	1 779	2 518	2 953	5 336	35 289
2015	4 627	19 737	1 693	2 622	2 907	5 247	36 833
2016	4 532	19 509	1 402	2 695	2 667	4 751	35 556
2017	4 549	19 582	1 228	2 780	2 603	4 189	34 931
2018	4 602	21 129	1 195	2 809	2 555	3 916	36 206
2019	4 515	21 886	1 142	2 875	2 465	3 712	36 595

* At year-end.

Section for Analytics and Statistics 29.1.2020

11.6 Recipients of disability allowance for persons under 16 by diagnosis, 1990–2019

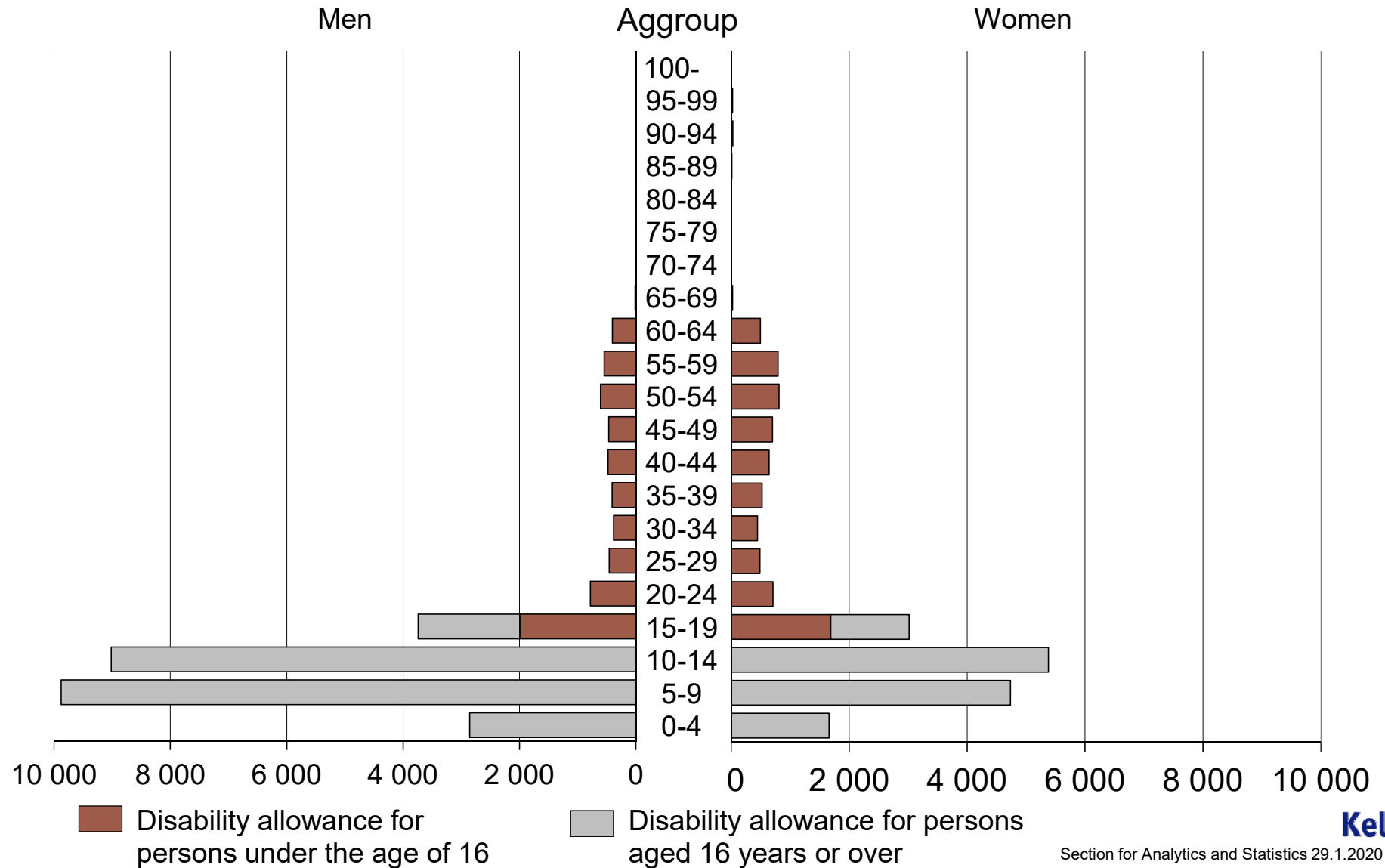


11.7 Recipients of disability allowance for persons under 16 and aged 16 and over by age group at year end 2019

Age group	Men		Women	
	Disability allowance for persons aged 16 years or over	Disability allowance for persons under the age of 16	disability allowance for persons aged 16 years or over	Disability allowance for persons under the age of 16
0-4	-	2 857	-	1 658
5-9	-	9 875	-	4 735
10-14	-	9 015	-	5 381
15-19	1 994	1 747	1 687	1 327
20-24	784	-	705	-
25-29	460	-	484	-
30-34	384	-	442	-
35-39	410	-	521	-
40-44	477	-	642	-
45-49	467	-	700	-
50-54	609	-	811	-
55-59	544	-	791	-
60-64	402	-	495	-
65-69	14	-	20	-
70-74	1	-	2	-
75-79	3	-	-	-
80-84	1	-	2	-
85-89	-	-	11	-
90-94	-	-	24	-
95-99	-	-	20	-
100-	-	-	4	-

Section for Analytics and Statistics 29.1.2020

11.7 Recipients of disability allowance for persons under 16 and aged 16 and over by age group at year end 2019

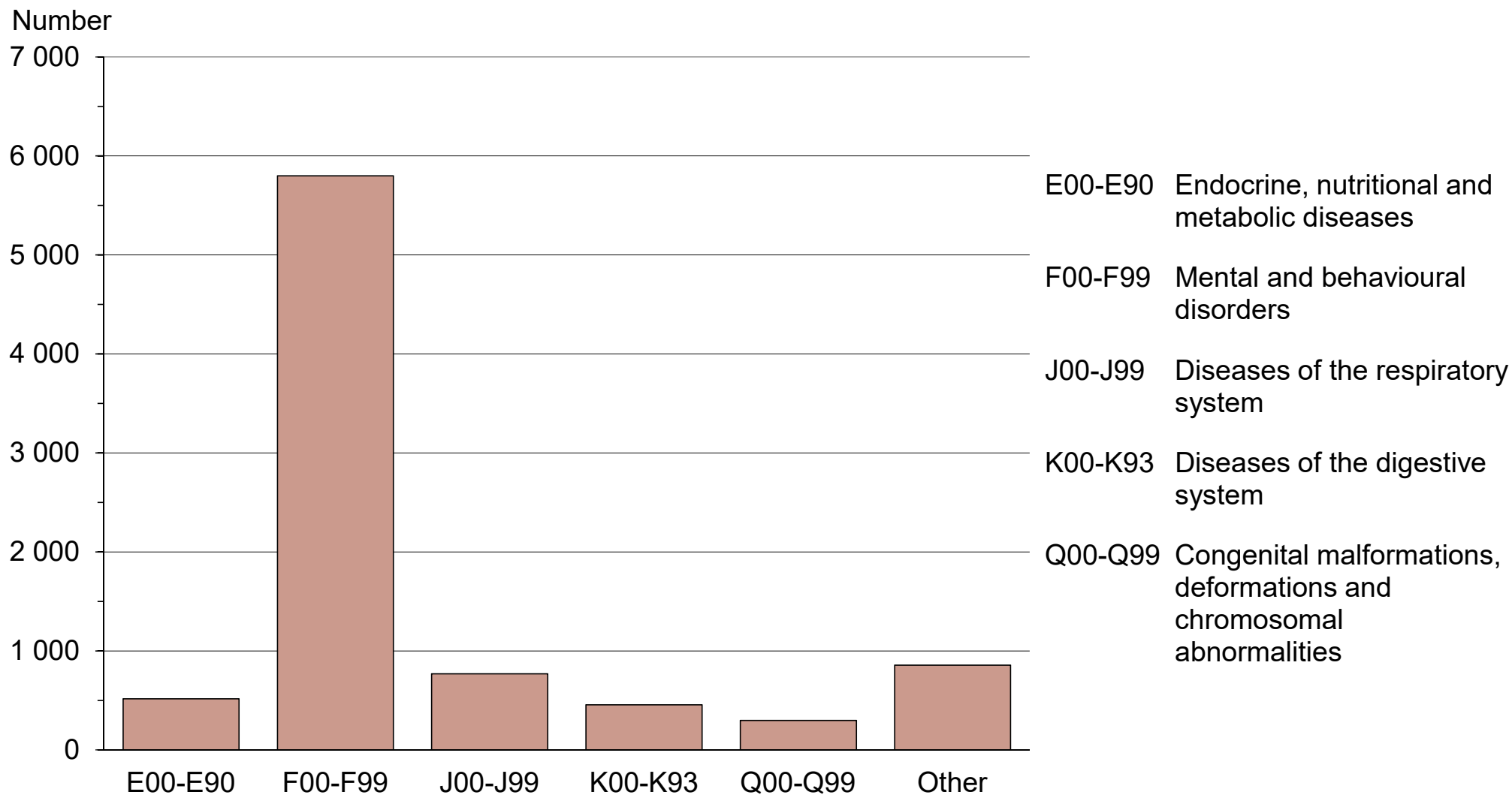


11.8 New awards of disability allowance for persons under 16 by diagnostic category, 2019

ICD10	Main disease category	Number
E00-E90	IV Endocrine, nutritional and metabolic diseases	516
F00-F99	V Mental and behavioural disorders	5 798
J00-J99	X Diseases of the respiratory system	768
K00-K93	XI Diseases of the digestive system	455
Q00-Q99	XVII Congenital malformations, deformations and chromosomal abnormalities	298
Other	Other diseases	857
	All diseases	8 692

Section for Analytics and Statistics 29.1.2020

11.8 New awards of disability allowance for persons under 16 by diagnostic category, 2019

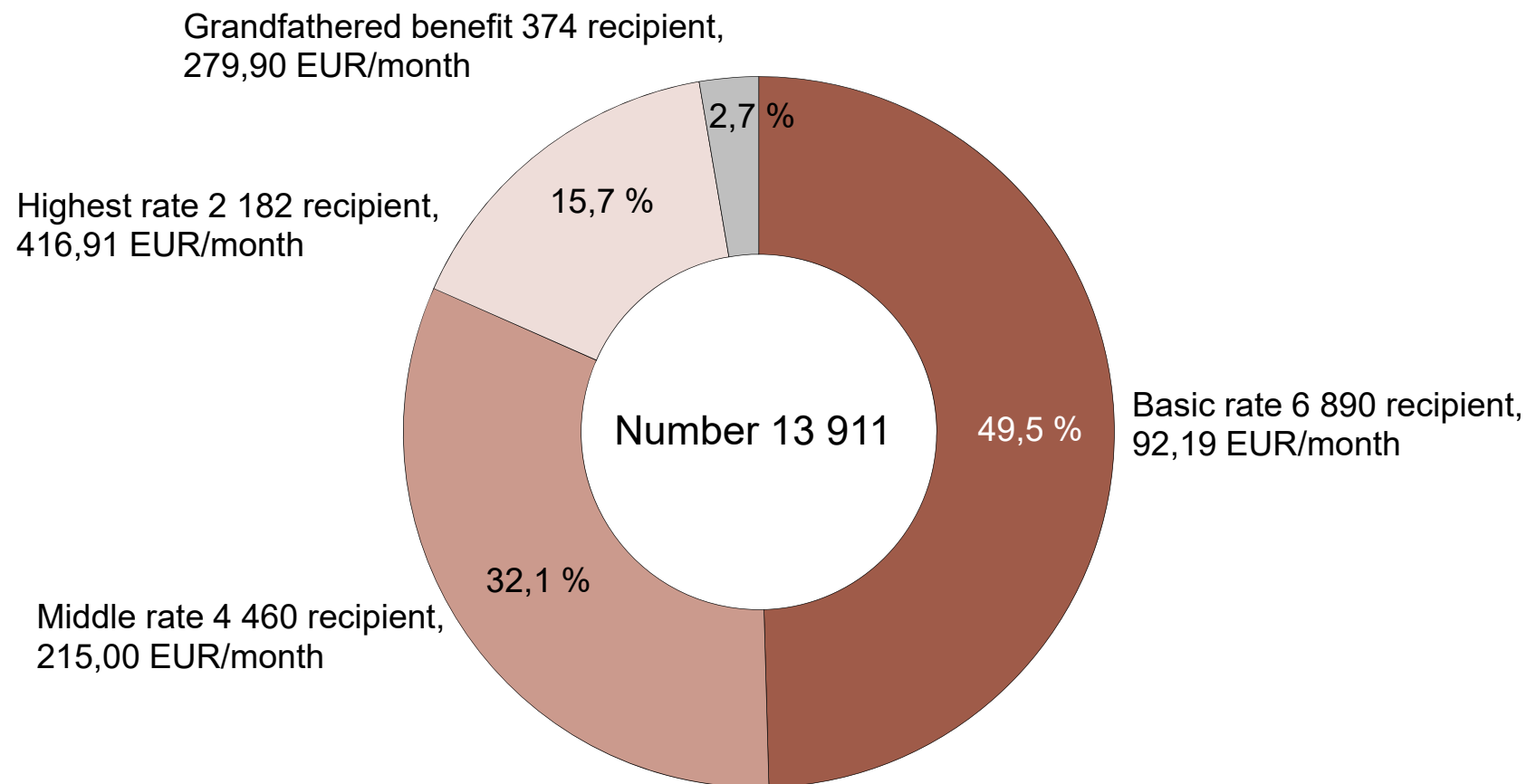


11.9 Recipients of disability allowance for persons aged 16 and over by level of benefit, 2019

Benefit level	Number	EUR/month
Basic rate	6 890	92,19
Middle rate	4 460	215,00
Highest rate	2 182	416,91
Grandfathered benefit	374	279,90
Data not available	5	157,09
Total	13 911	187,57

Section for Analytics and Statistics 29.1.2020

11.9 Recipients of disability allowance for persons aged 16 and over by level of benefit, 2019



11.10 Recipients of disability allowance for persons aged 16 and over by diagnosis, 1990–2019

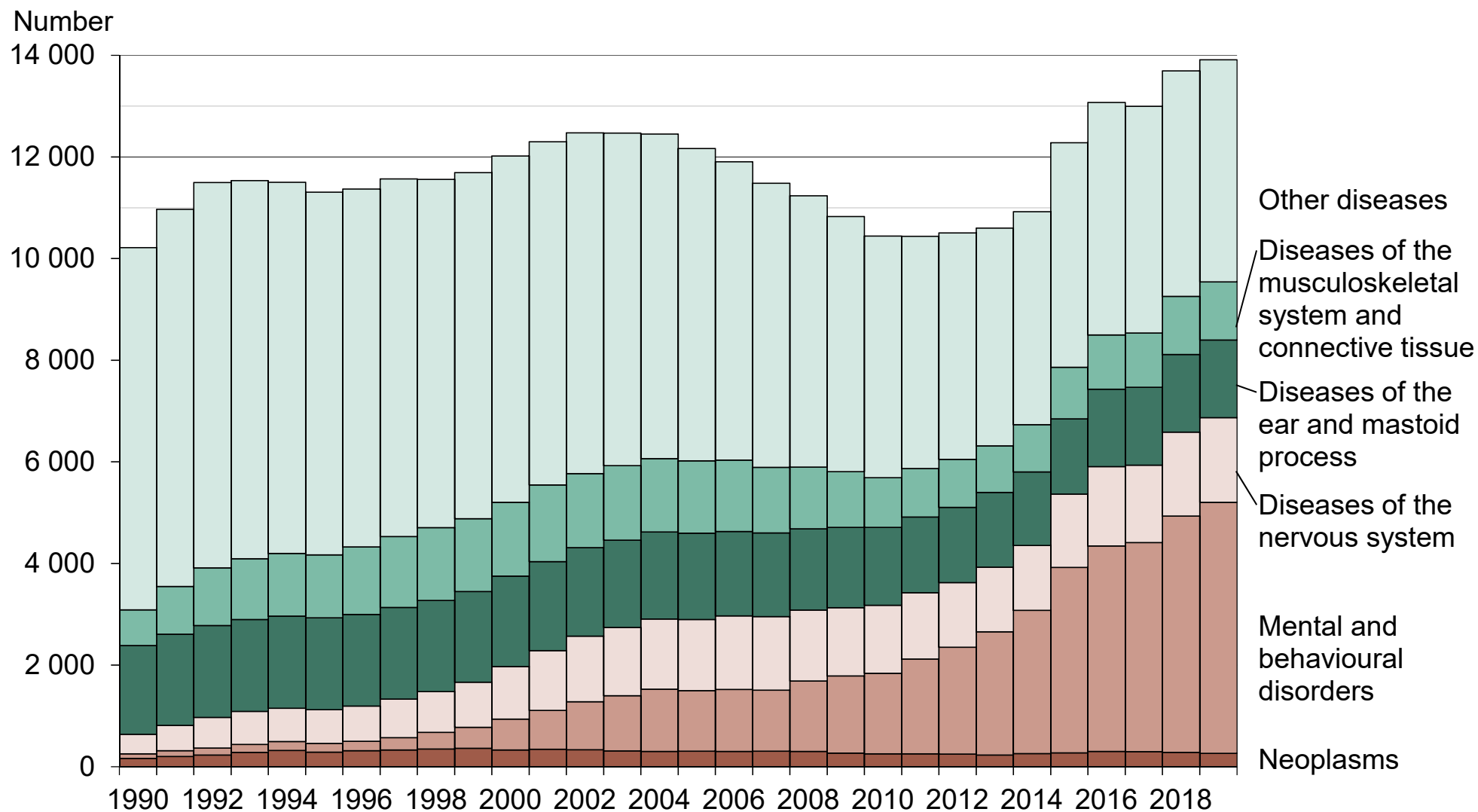
Year*	Number						Total
	Neoplasms	Mental and behavioural disorders	Diseases of the nervous system	Diseases of the ear and mastoid process	Diseases of the musculoskeletal system and connective tissue	Other diseases	
1990	164	90	385	1 745	705	7 128	10 217
1991	201	117	497	1 795	937	7 424	10 971
1992	231	135	604	1 811	1 132	7 586	11 499
1993	281	160	647	1 808	1 196	7 441	11 533
1994	319	179	653	1 812	1 234	7 307	11 504
1995	286	170	666	1 809	1 238	7 136	11 305
1996	316	185	694	1 804	1 325	7 044	11 368
1997	331	240	761	1 804	1 396	7 034	11 566
1998	350	325	802	1 795	1 432	6 857	11 561
1999	364	410	890	1 785	1 434	6 810	11 693
2000	330	608	1 035	1 778	1 452	6 817	12 020
2001	345	765	1 176	1 753	1 506	6 755	12 300
2002	333	948	1 287	1 742	1 459	6 707	12 476
2003	313	1 085	1 345	1 718	1 466	6 541	12 468
2004	303	1 225	1 379	1 712	1 446	6 388	12 453
2005	306	1 193	1 401	1 696	1 423	6 148	12 167
2006	304	1 219	1 447	1 662	1 401	5 870	11 903
2007	305	1 202	1 448	1 645	1 290	5 591	11 481
2008	302	1 384	1 396	1 601	1 213	5 342	11 238
2009	268	1 518	1 345	1 578	1 098	5 021	10 828

Year*	Number						Total
	Neoplasms	Mental and behavioural disorders	Diseases of the nervous system	Diseases of the ear and mastoid process	Diseases of the musculoskeletal system and connective tissue	Other diseases	
2010	256	1 583	1 338	1 532	981	4 753	10 443
2011	254	1 867	1 302	1 491	953	4 574	10 441
2012	248	2 105	1 271	1 479	945	4 456	10 504
2013	230	2 426	1 272	1 469	918	4 284	10 599
2014	261	2 815	1 277	1 450	931	4 191	10 925
2015	271	3 650	1 444	1 482	1 015	4 418	12 280
2016	301	4 043	1 562	1 525	1 069	4 573	13 073
2017	296	4 116	1 524	1 534	1 068	4 459	12 997
2018	284	4 650	1 652	1 525	1 147	4 435	13 693
2019	263	4 939	1 666	1 529	1 145	4 369	13 911

* At year-end.

Section for Analytics and Statistics 29.1.2020

11.10 Recipients of disability allowance for persons aged 16 and over by diagnosis, 1990–2019

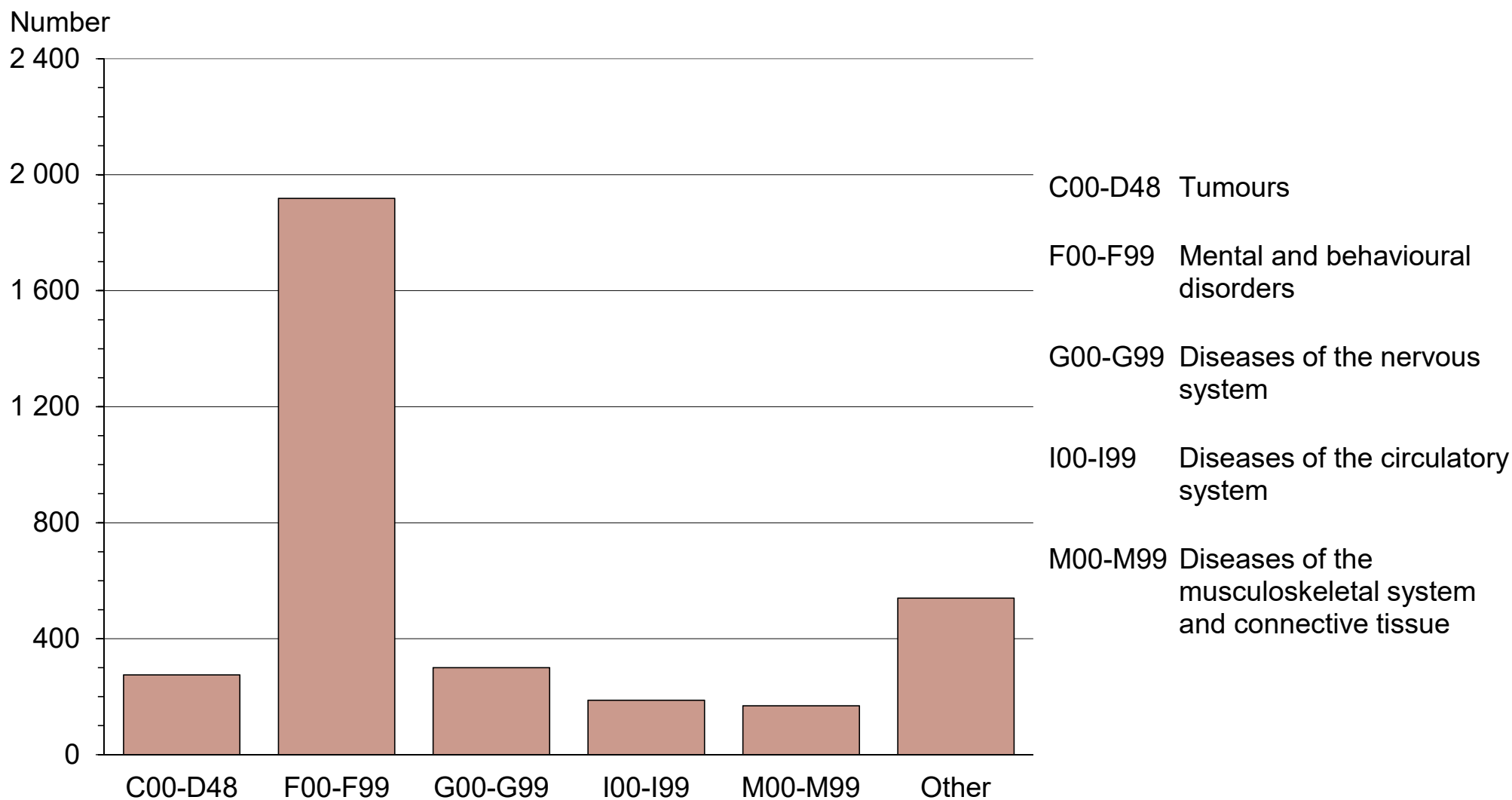


11.11 New awards of disability allowance for persons aged 16 and over by diagnostic category, 2019

ICD10	Main disease category	Number
C00-D48	II Tumours	275
F00-F99	V Mental and behavioural disorders	1 918
G00-G99	VI Diseases of the nervous system	300
I00-I99	IX Diseases of the circulatory system	188
M00-M99	XIII Diseases of the musculoskeletal system and connective tissue	169
Other	Other diseases	540
	All diseases	3 390

Section for Analytics and Statistics 29.1.2020

11.11 New awards of disability allowance for persons aged 16 and over by diagnostic category, 2019

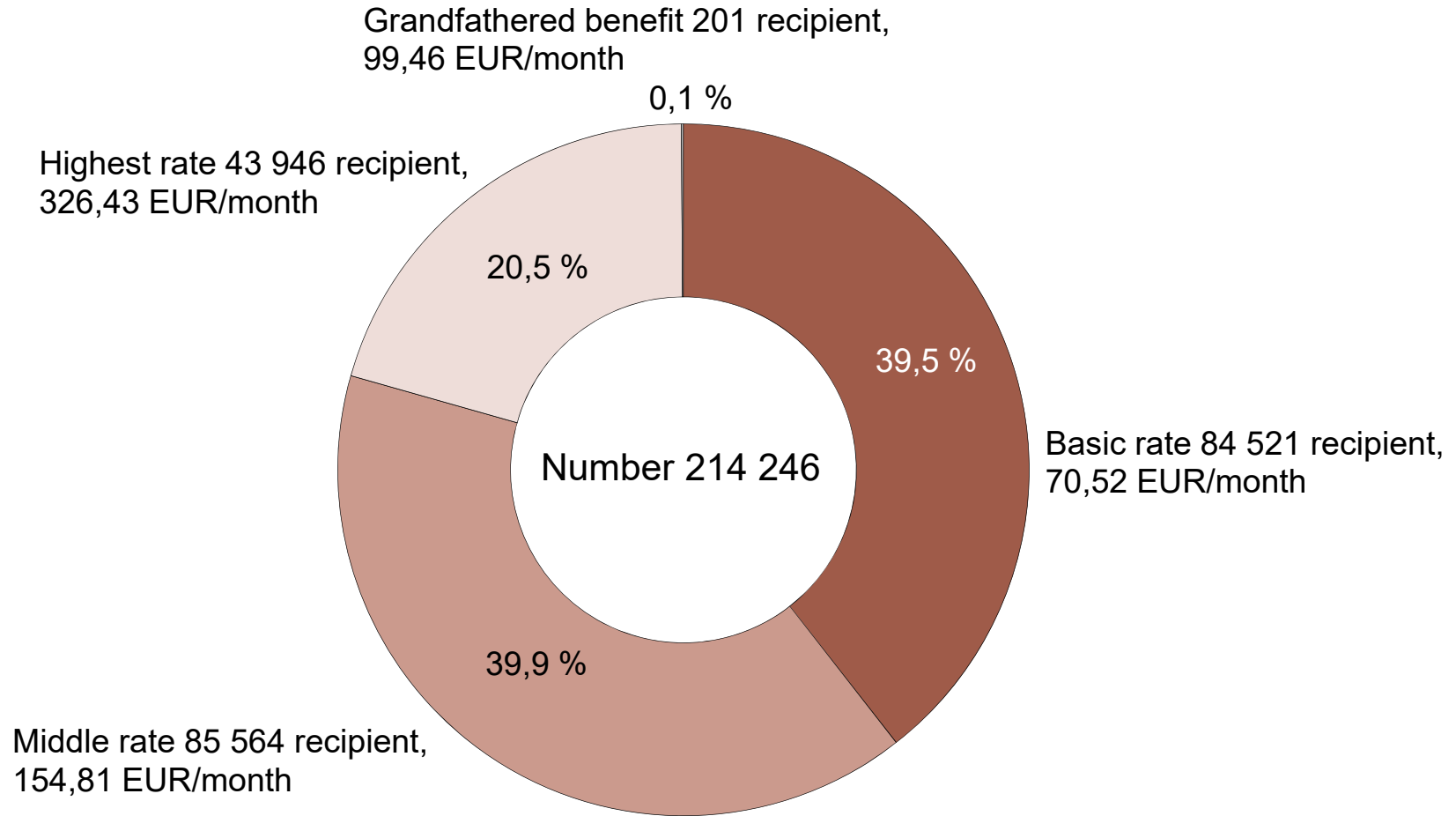


11.12 Recipients of care allowance for pensioners by level of benefit, 2019

Benefit level	Number	EUR/month
Basic rate	84 521	70,52
Middle rate	85 564	154,81
Highest rate	43 946	326,43
Grandfathered benefit	201	99,46
Data not available	14	130,96
Total	214 246	156,71

Section for Analytics and Statistics 29.1.2020

11.12 Recipients of care allowance for pensioners by level of benefit, 2019



11.13 Recipients of care allowance for pensioners by diagnosis, 1990–2019

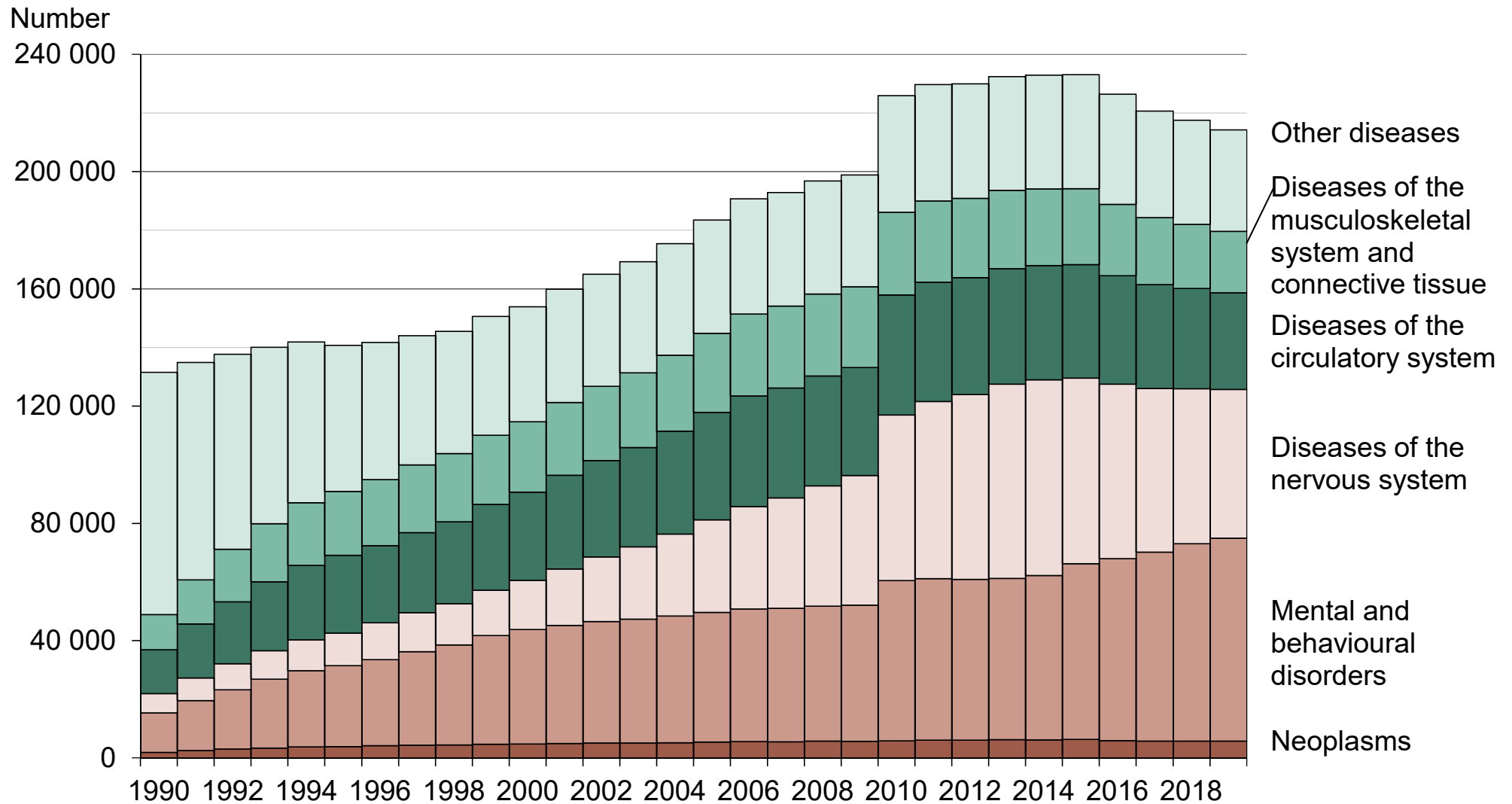
Year*	Number						Total
	Neoplasms	Mental and behavioural disorders	Diseases of the nervous system	Diseases of the circulatory system	Diseases of the musculoskeletal system and connective tissue	Other diseases	
1990	1 841	13 452	6 579	14 979	11 987	82 666	131 504
1991	2 519	17 000	7 736	18 384	15 112	74 161	134 912
1992	2 958	20 287	8 826	21 136	17 967	66 496	137 670
1993	3 365	23 476	9 717	23 488	19 849	60 135	140 030
1994	3 776	25 973	10 519	25 390	21 354	54 851	141 863
1995	3 845	27 620	11 057	26 549	21 831	49 852	140 754
1996	4 170	29 362	12 529	26 334	22 557	46 722	141 674
1997	4 284	31 910	13 357	27 296	23 133	44 066	144 046
1998	4 391	34 125	14 082	27 927	23 243	41 748	145 516
1999	4 677	37 089	15 426	29 227	23 641	40 513	150 573
2000	4 761	39 036	16 742	30 145	24 012	39 200	153 896
2001	4 850	40 312	19 250	31 972	24 826	38 710	159 920
2002	5 022	41 499	21 997	32 941	25 274	38 228	164 961
2003	5 026	42 251	24 716	33 852	25 539	37 847	169 231
2004	5 170	43 229	27 973	35 046	25 902	38 075	175 395
2005	5 384	44 241	31 604	36 610	27 012	38 618	183 469
2006	5 548	45 222	34 915	37 794	27 971	39 272	190 722
2007	5 478	45 548	37 637	37 493	27 955	38 722	192 833
2008	5 686	46 035	41 082	37 454	28 008	38 563	196 828
2009	5 657	46 413	44 266	36 859	27 519	38 168	198 882

Year*	Number						Total
	Neoplasms	Mental and behavioural disorders	Diseases of the nervous system	Diseases of the circulatory system	Diseases of the musculoskeletal system and connective tissue	Other diseases	
2010	5 832	54 630	56 467	41 003	28 170	39 785	225 887
2011	6 047	55 082	60 476	40 648	27 762	39 678	229 693
2012	6 021	54 838	63 062	39 895	27 079	39 040	229 935
2013	6 174	55 057	66 281	39 392	26 650	38 864	232 418
2014	6 157	56 070	66 721	38 975	26 183	38 822	232 928
2015	6 325	59 894	63 322	38 731	25 932	38 880	233 084
2016	5 896	62 079	59 546	36 963	24 328	37 572	226 384
2017	5 686	64 519	55 767	35 476	22 889	36 330	220 667
2018	5 716	67 367	52 814	34 219	21 900	35 499	217 515
2019	5 689	69 239	50 772	32 947	20 953	34 646	214 246

* At year-end.

Section for Analytics and Statistics 29.1.2020

11.13 Recipients of care allowance for pensioners by diagnosis, 1990–2019

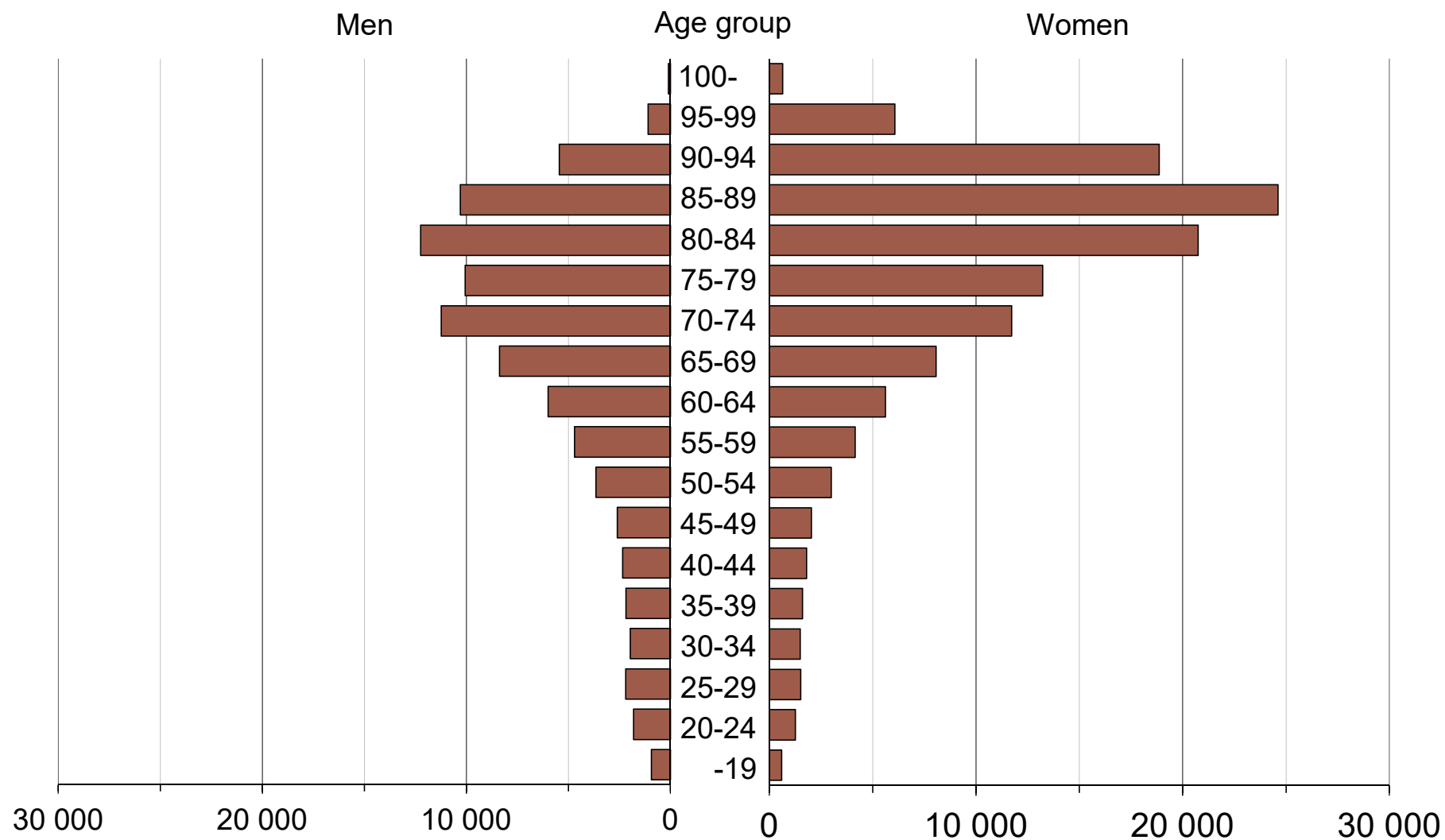


11.14 Recipients of care allowance for pensioners by age group, 2019

Age group	Men	Women
-19	927	599
20-24	1 797	1 260
25-29	2 191	1 523
30-34	1 963	1 493
35-39	2 177	1 614
40-44	2 340	1 811
45-49	2 595	2 039
50-54	3 647	2 995
55-59	4 693	4 151
60-64	5 994	5 625
65-69	8 375	8 072
70-74	11 231	11 728
75-79	10 053	13 229
80-84	12 240	20 746
85-89	10 300	24 616
90-94	5 440	18 859
95-99	1 088	6 081
100-	101	653
Total	87 152	127 094

Section for Analytics and Statistics 29.1.2020

11.14 Recipients of care allowance for pensioners by age group, 2019

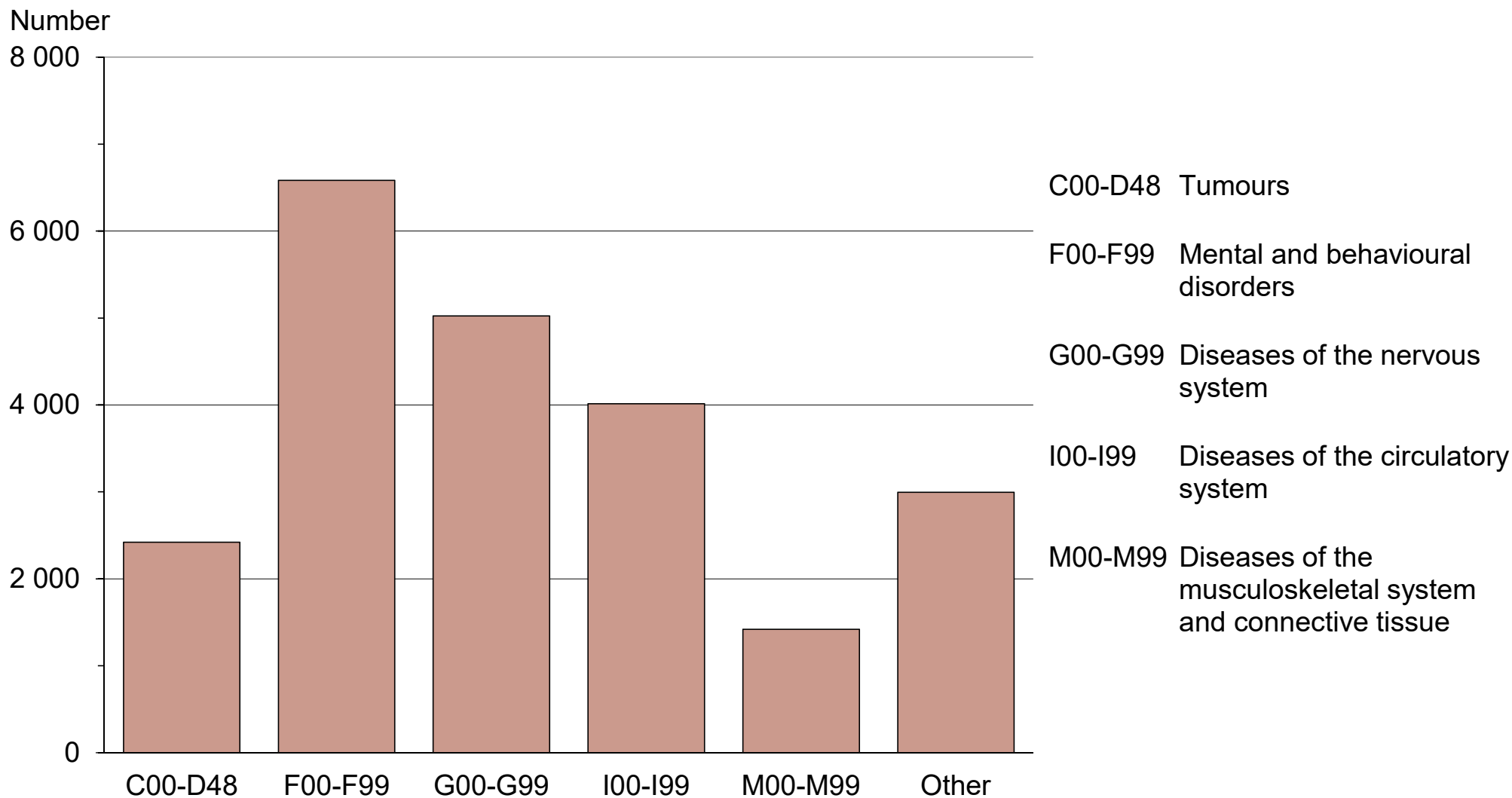


11.15 New awards of care allowance for pensioners by diagnostic category, 2019

ICD10	Main disease category	Number
C00-D48	II Tumours	2 422
F00-F99	V Mental and behavioural disorders	6 583
G00-G99	VI Diseases of the nervous system	5 023
I00-I99	IX Diseases of the circulatory system	4 013
M00-M99	XIII Diseases of the musculoskeletal system and connective tissue	1 420
Other	Other diseases	2 996
	All diseases	22 457

Section for Analytics and Statistics 29.1.2020

11.15 New awards of care allowance for pensioners by diagnostic category, 2019

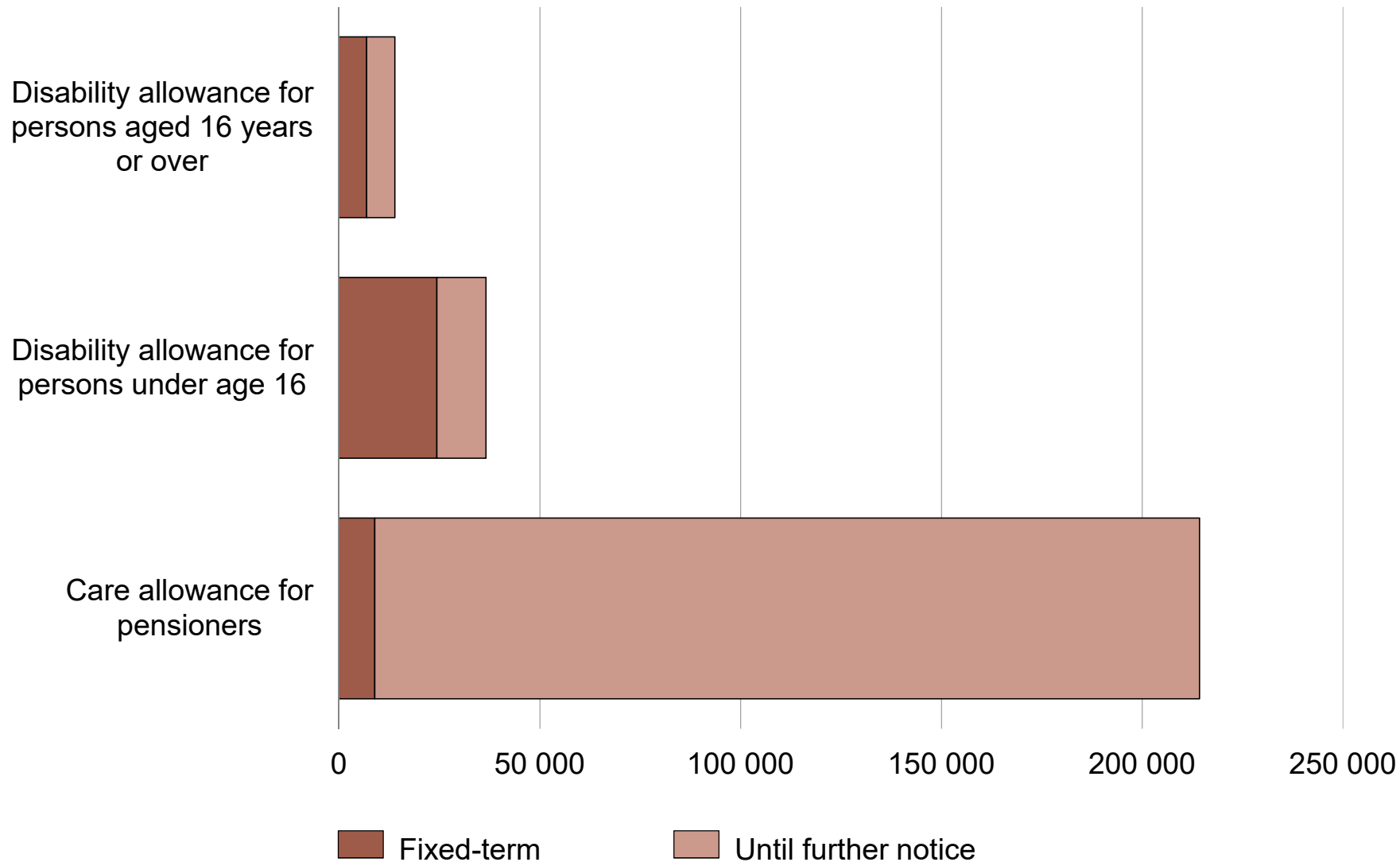


11.16 Disability benefits and share of fixed-term benefits at year end 2019

Benefit category	Fixed-term	Until further notice
Disability allowance for persons aged 16 years or over	6 850	7 061
Disability allowance for persons under age 16	24 349	12 246
Care allowance for pensioners	8 899	205 347

Section for Analytics and Statistics 29.1.2020

11.16 Disability benefits and share of fixed-term benefits at year end 2019



11.17 Persons entitled to interpreting services for the disabled by type of recipient at year end 2019

Type of recipient	Number
Hearing impaired	3 582
Speech impaired	1 974
Hearing and vision impaired	359
Total	5 915

Section for Analytics and Statistics 29.1.2020

11.17 Persons entitled to interpreting services for the disabled by type of recipient at year end 2019

