



! Changes to unemployment benefits

General social security benefit replaces unemployment benefits paid by Kela

Basic unemployment allowance and labour market subsidy will end on 1 May 2026. Instead, Kela will begin to pay general social security benefit to people who are unemployed. You do not need to contact Kela about this change.

Kela pays two unemployment benefits: basic unemployment allowance and labour market subsidy. Both of these will stop.

A new general social security benefit (yleistuki) will replace them both.

If Kela pays you basic unemployment allowance or labour market subsidy, Kela will start paying you the general social security benefit instead in May 2026.

The change happens automatically, so you do not have to contact Kela.

However, you must continue to fill in an unemployment status report (työttömyysajan ilmoitus) in the OmaKela e-service every 4 weeks.

How much is the general social security benefit?

The general social security benefit is EUR 37.21 per day, and it is paid for 5 days a week.

This means that the general social security benefit is the same amount of money per day as the basic unemployment allowance or the labour market subsidy.

How income affects the general social security benefit

All income you get can reduce the amount of your general social security benefit.

Kela will check if you have any income.

After that, Kela will contact you if necessary.

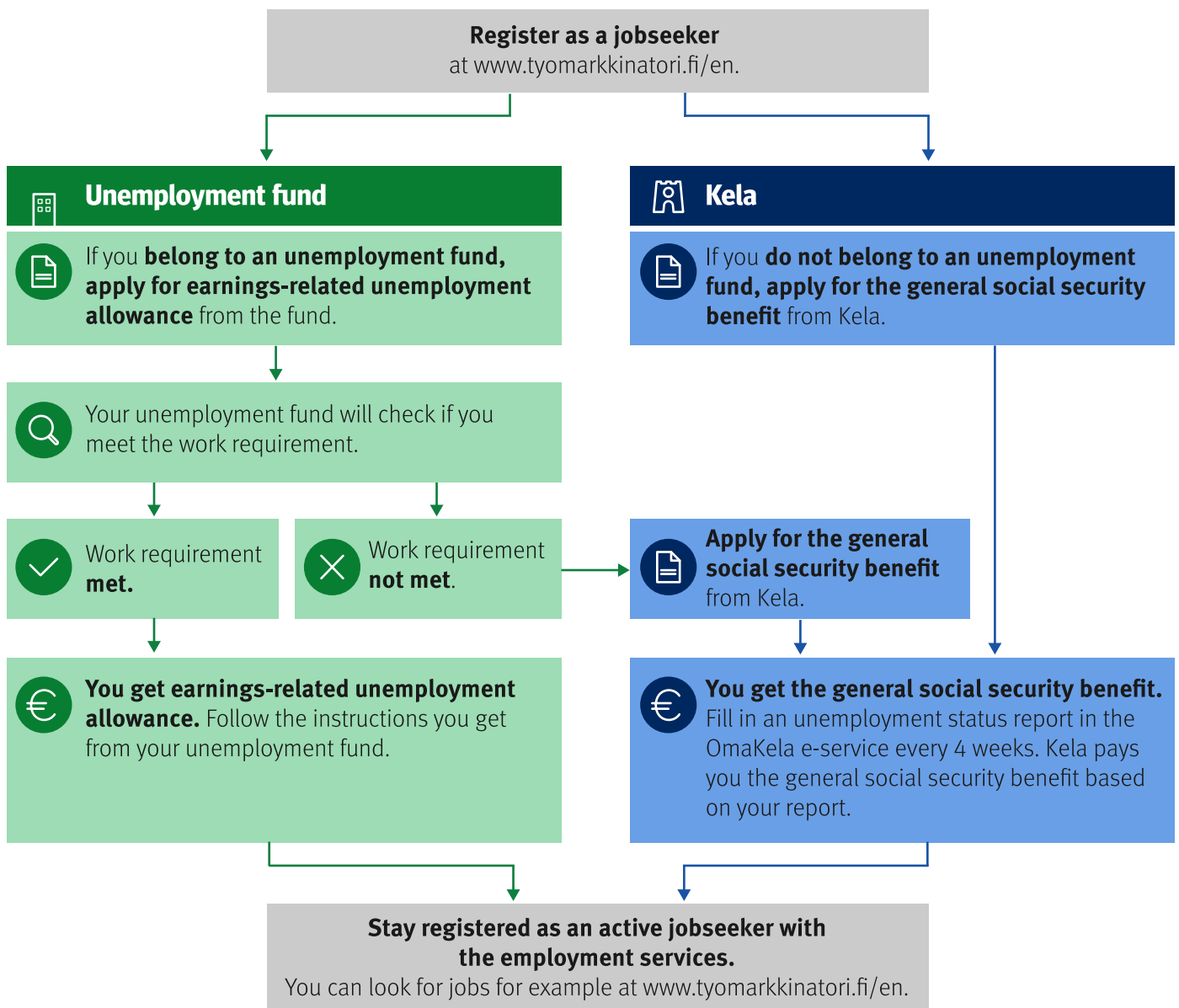
If you become unemployed

You can apply for the general social security benefit in the OmaKela e-service starting from 1 May 2026. OmaKela is available in Finnish and Swedish.

If your unemployment continues, you must stay registered as an active jobseeker with the employment services and continue to regularly file unemployment status reports in OmaKela every 4 weeks.

This flowchart shows what you must do if you become unemployed.

Do this right after you become unemployed



Read more: www.kela.fi/general-social-security-benefit